

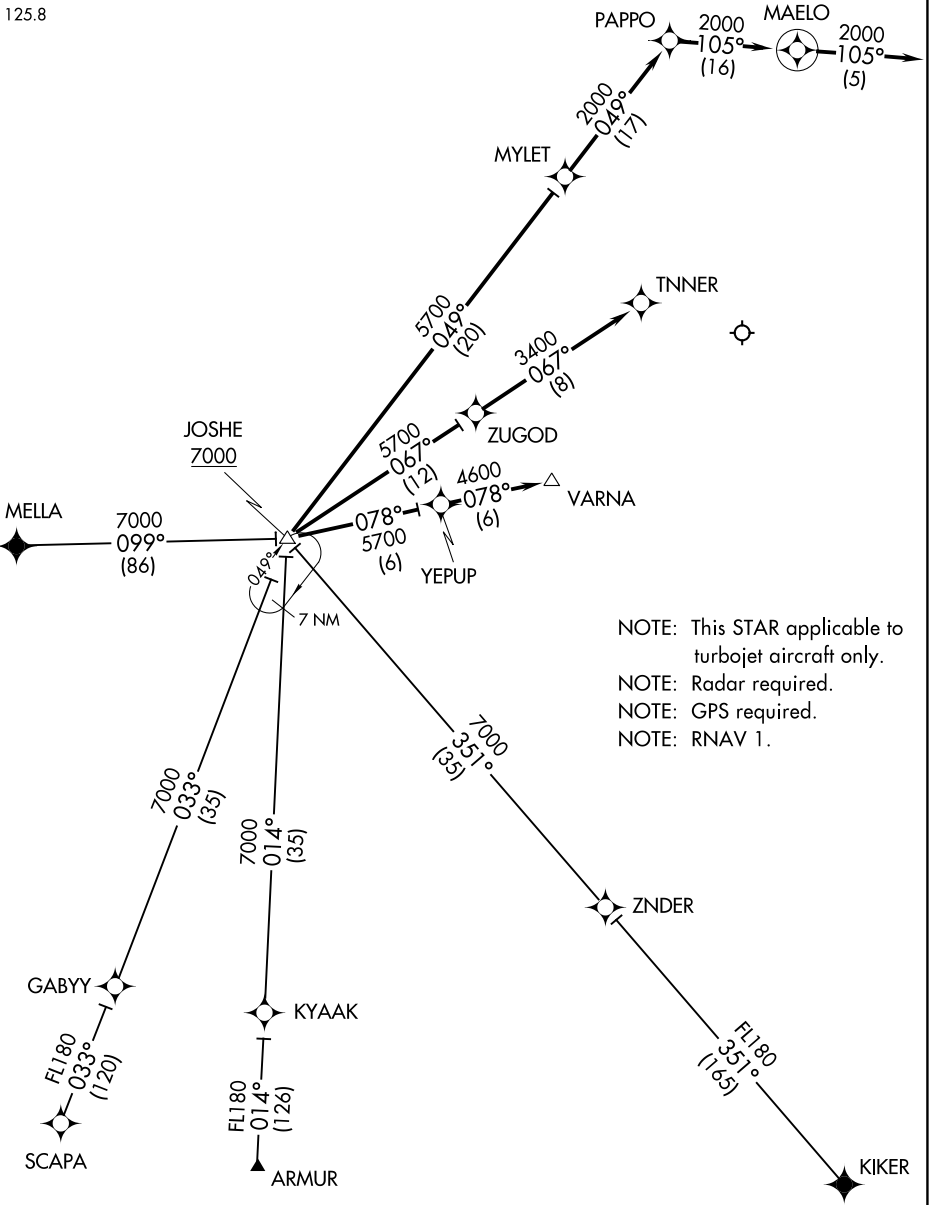
(JOSHE.JOSHE3) 19339

AL-784 (FAA)

LUIS MUNOZ MARIN INTL
SAN JUAN, PUERTO RICO

JOSHE THREE ARRIVAL (RNAV)

SAN JUAN APP CON
119.4 269.2 (WEST & SW)
120.9 290.2 (NORTH & EAST)
D-ATIS
125.8



NOTE: This STAR applicable to turbojet aircraft only.
 NOTE: Radar required.
 NOTE: GPS required.
 NOTE: RNAV 1.

SE-3, 22 FEB 2024 to 21 MAR 2024

SE-3, 22 FEB 2024 to 21 MAR 2024

NOTE: Chart not to scale.

(NARRATIVE ON FOLLOWING PAGE)

JOSHE THREE ARRIVAL (RNAV)

(JOSHE.JOSHE3) 18NOV10

SAN JUAN, PUERTO RICO
LUIS MUNOZ MARIN INTL

JOSHE THREE ARRIVAL (RNAV)

ARRIVAL ROUTE DESCRIPTION

ARMUR TRANSITION (ARMUR.JOSHE3):

KIKER TRANSITION (KIKER.JOSHE3):

MELLA TRANSITION (MELLA.JOSHE3):

SCAPA TRANSITION (SCAPA.JOSHE3):

LANDING EAST RWY 8: From over JOSHE on track 078° to YEPUP, then on track 078° to VARNA.

LANDING EAST RWY 10: From over JOSHE on track 067° to ZUGOD, then on track 067° track to TNNER.

LANDING WEST RWYS 26/28: From over JOSHE on track 049° to MYLET, then on track 049° to PAPPO, then on track 105° to MAELO, then on heading 105°. Expect RADAR vectors to final approach course.

SE-3, 22 FEB 2024 to 21 MAR 2024

SE-3, 22 FEB 2024 to 21 MAR 2024