

ZOOMR TWO ARRIVAL

AL-403 (FAA)

SPOKANE, WASHINGTON

NW-1, 22 FEB 2024 to 21 MAR 2024

ARRIVAL ROUTE DESCRIPTION

EPHRATA TRANSITION (EPH.ZOOMR2): From over EPH VORTAC on EPH R-065 to ZOOMR. Thence, . . .

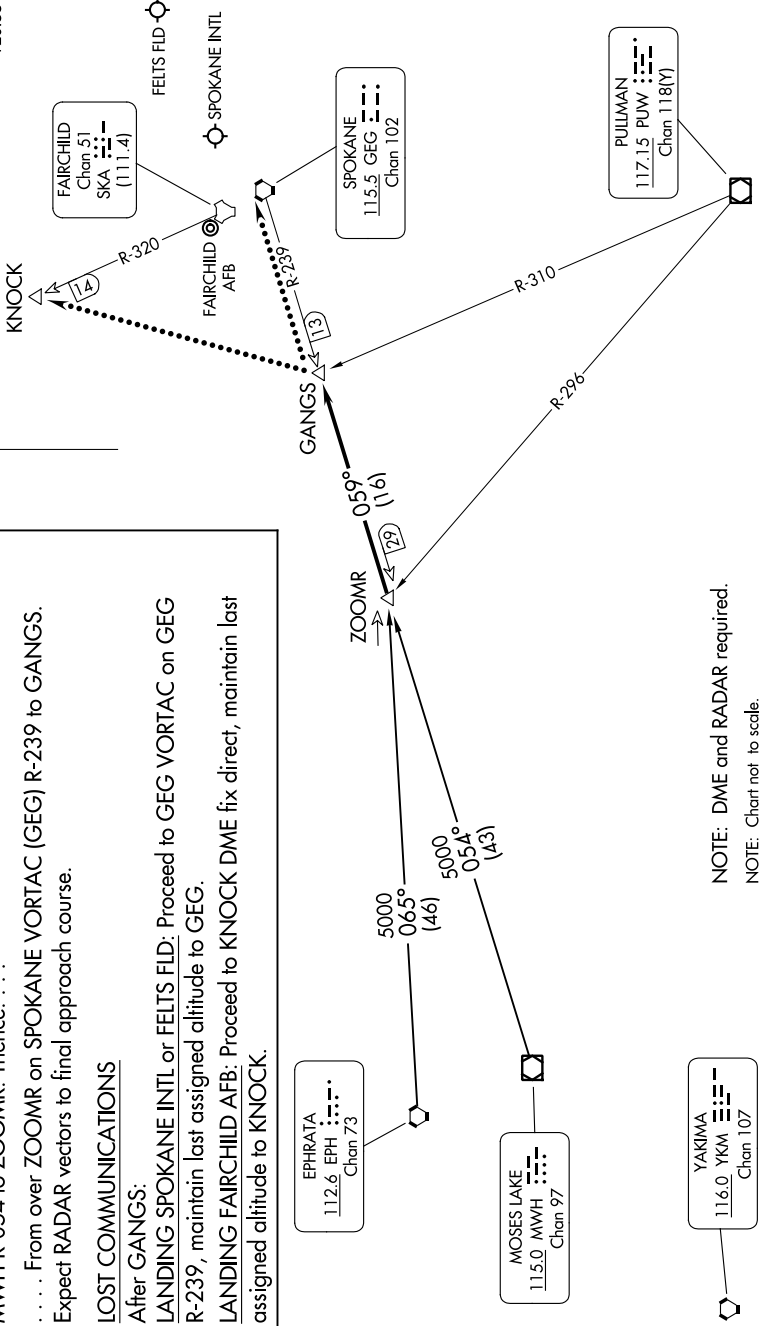
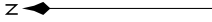
MOSES LAKE TRANSITION (MWH.ZOOMR2): From over MWH VOR/DME on MWH R-054 to ZOOMR. Thence, . . .

. . . From over ZOOMR on SPOKANE VORTAC (GEG) R-239 to GANGS. Expect RADAR vectors to final approach course.

LOST COMMUNICATIONS

After GANGS:
LANDING SPOKANE INTL or FELTS FLD: Proceed to GEG VORTAC on GEG R-239, maintain last assigned altitude to GEG.
LANDING FAIRCHILD AFB: Proceed to KNOCK DME fix direct, maintain last assigned altitude to KNOCK.

SPOKANE APP CON
 123.75 282.25
 GEG ATIS
 124.325 254.375
 KSKA ATIS
 257.625
 SFF ATIS
 120.55



ZOOMR TWO ARRIVAL

SPOKANE, WASHINGTON

NW-1, 22 FEB 2024 to 21 MAR 2024