

WAAS CH <b>42520</b> <b>W23A</b>	APP CRS <b>229°</b>	Rwy Idg TDZE Apt Elev	<b>6333</b> <b>1663</b> <b>1663</b>
--	------------------------	-----------------------------	---

# RNAV (GPS) RWY 23

ADIRONDACK RGNL (SLK)

RNP APCH - GPS.

**⚠** Rwy 23 helicopter visibility reduction below  $\frac{3}{4}$  SM NA. For uncompensated Baro-VNAV systems, LNAV/VNAV NA below  $-29^{\circ}\text{C}$  or above  $54^{\circ}\text{C}$ . When local altimeter setting not received, procedure NA. Circling Rwy 5, 9, 27 NA at night. Inop table does not apply to LPV DA. For inop ALS, increase LNAV/VNAV all Cats visibility to  $1\frac{3}{8}$  SM; increase LNAV Cat A/B visibility to 1 SM.

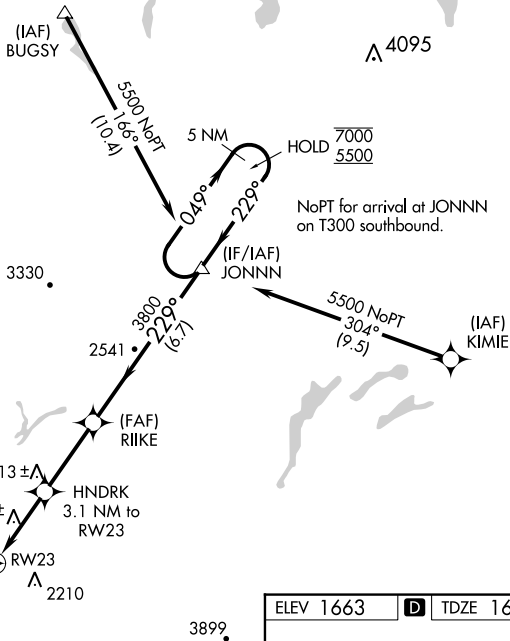
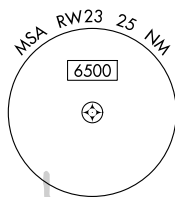


**MISSED APPROACH:**  
Climb to 3500 then climbing right turn to 5500 direct JONNN and hold.

ASOS  
**124.175**

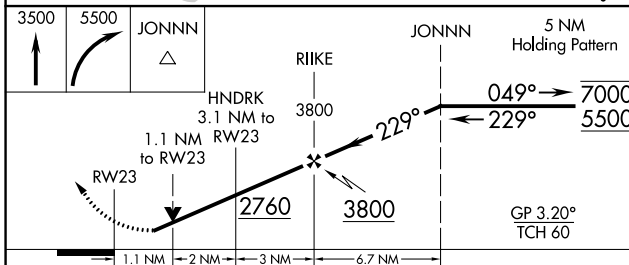
BOSTON CENTER  
**120.35 342.25**

UNICOM  
**123.0 (CTAF) 0**

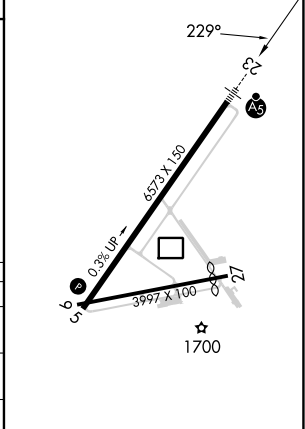


NE-2, 22 FEB 2024 to 21 MAR 2024

NE-2, 22 FEB 2024 to 21 MAR 2024



ELEV 1663 **D** TDZE 1663



CATEGORY	A	B	C	D
LPV DA		1913- $\frac{3}{4}$	250 (300- $\frac{3}{4}$ )	
LNAV/VNAV DA		2149-1	486 (500-1)	
LNAV MDA		2100- $\frac{3}{4}$	437 (500- $\frac{3}{4}$ )	
<b>C</b> CIRCLING	2500-1 $\frac{1}{4}$ 837 (900-1 $\frac{1}{4}$ )	2660-1 $\frac{1}{2}$ 997 (1000-1 $\frac{1}{2}$ )	2660-3 997 (1000-3)	2800-3 1137 (1200-3)

HIRL Rwy 5-23 **0**  
MIRL Rwy 9-27 **0**