

APP CRS	Rwy Idg	9000
123°	TDZE	618
	Apt Elev	618

RNAV (RNP) Z RWY 11

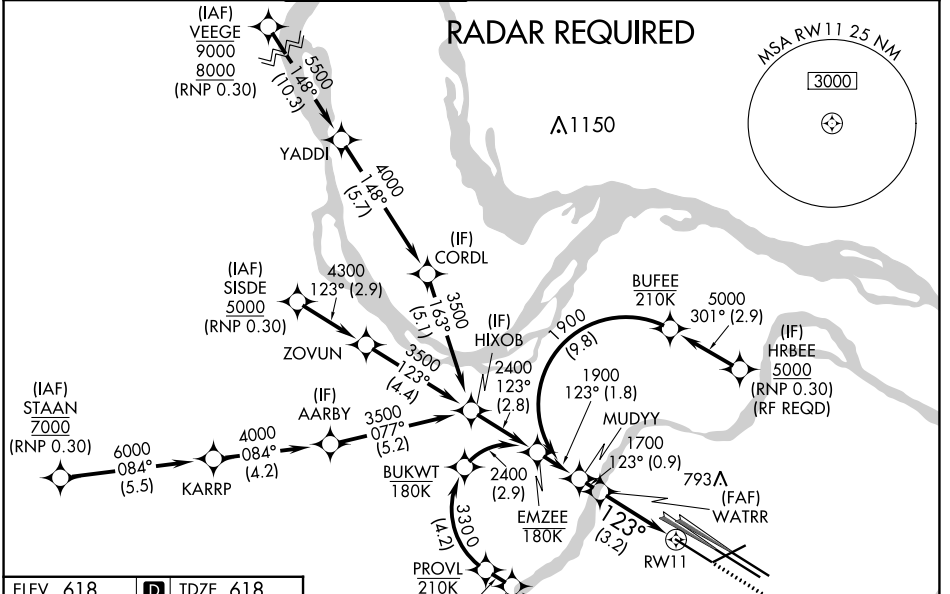
ST LOUIS LAMBERT INTL (STL)

For uncompensated Baro-VNAV systems, procedure NA below -16°C (4°F) or above 54°C (130°F). Simultaneous approach authorized with Rwy 12L/R, except for arrivals at RRRPP and HRBEE. Use of FD or AP providing RNAV track guidance required during simultaneous operations. GPS required. For inop ALS, increase RNP 0.30 all Cats visibility to ¾.

ALS-F-2

MISSED APPROACH: Climb to 1100 then climbing right turn to 3000 direct IMPER and hold.

D-ATIS	ST. LOUIS APP CON	ST. LOUIS TOWER	GND CON	CLNC DEL	CPDLC
125.025 379.925	132.125 360.6	132.475 239.275	121.9 348.6 (Inbound) 121.65 377.175 (Outbound) 118.925 227.125 (Rwy 11/29)	119.5 363.1	

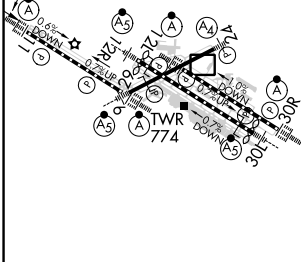


NC-3, 22 FEB 2024 to 21 MAR 2024

NC-3, 22 FEB 2024 to 21 MAR 2024

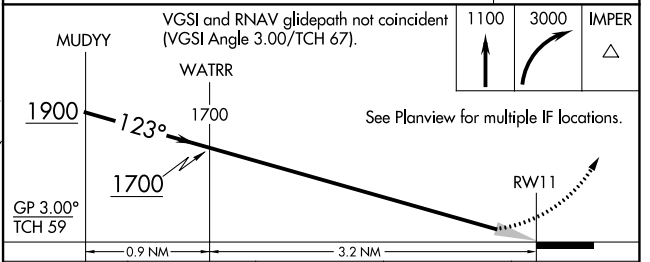
ELEV 618	D	TDZE 618
----------	----------	----------

Rwy 6-24 7603 X 150
 Rwy 11-29 9000 X 150
 Rwy 12L-30R 9013 X 150
 Rwy 12R-30L 11020 X 150



HIRL all Rwys
 TDZ/CL Rwys 11, 12L, 12R, 29, and 30R

MISSED APCH FIX IMPER



CATEGORY	A	B	C	D
RNP 0.30 DA		875-½	257 (300-½)	

AUTHORIZATION REQUIRED