

VOR/DME ULL <b>117.3</b> Chan <b>120</b>	APP CRS <b>229°</b>	Rwy Idg <b>4400</b> TDZE <b>58</b> Apt Elev <b>59</b>
--	------------------------	---

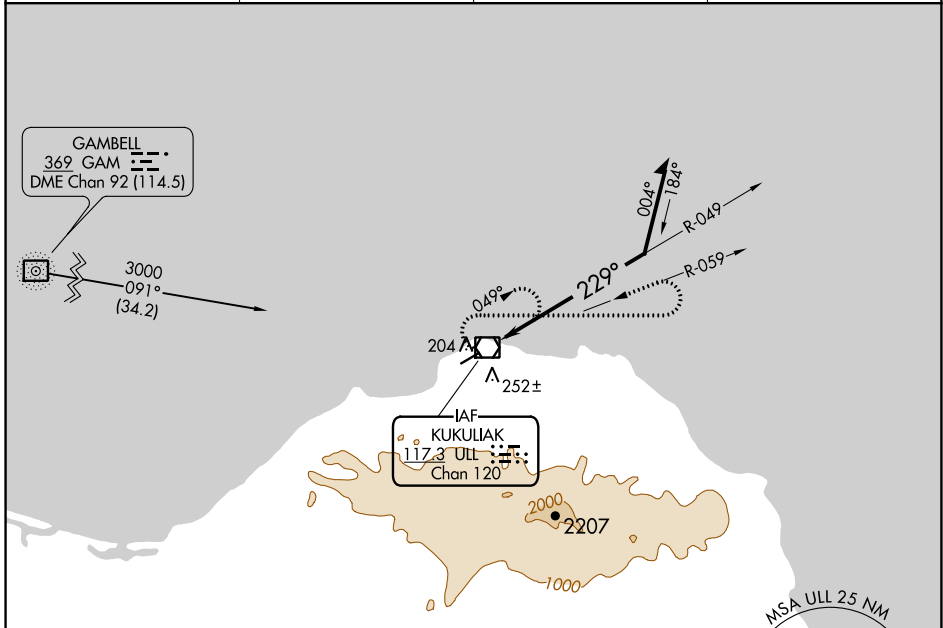
# VOR RWY 23

SAVOONGA (SVA) (PASA)

**⚠** Circling NA southeast of Rwy 5-23. When local altimeter setting not received, use Gambell altimeter setting and increase all MDAs 100 feet; increase S-23 Cat C/D visibility ¼ SM and Circling Cat C visibility ½ SM. VDP NA with Gambell altimeter setting.

**⚠** MISSED APPROACH: Climbing right turn to 3300 via heading 090° and ULL VOR/DME R-059 then left turn via ULL VOR/DME R-059 to ULL VOR/DME and hold.

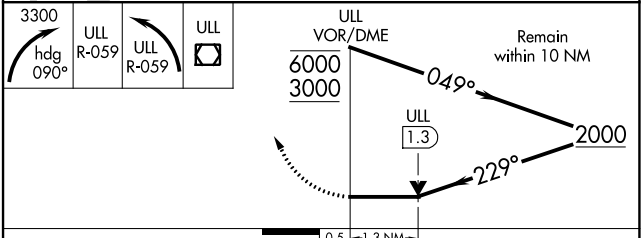
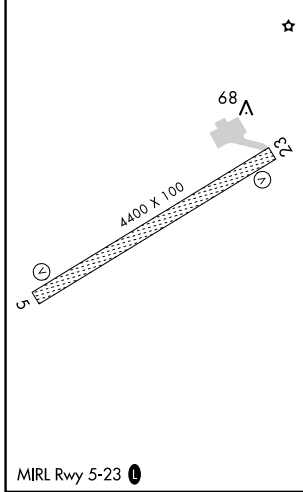
AWOS-3P <b>121.3</b>	ANCHORAGE CENTER <b>132.2 281.4</b>	NOME RADIO <b>122.3</b>	CTAF <b>122.7</b> <b>Ⓛ</b>
-------------------------	--	----------------------------	-------------------------------



AK, 25 JAN 2024 to 21 MAR 2024

AK, 25 JAN 2024 to 21 MAR 2024

ELEV 59	TDZE 58
---------	---------



CATEGORY	A	B	C	D
S-23	660-1	602 (700-1)	660-1¾ 602 (700-1¾)	660-2 602 (700-2)
CIRCLING	660-1	601 (700-1)	780-2 721 (800-2)	1160-3 1101 (1200-3)