

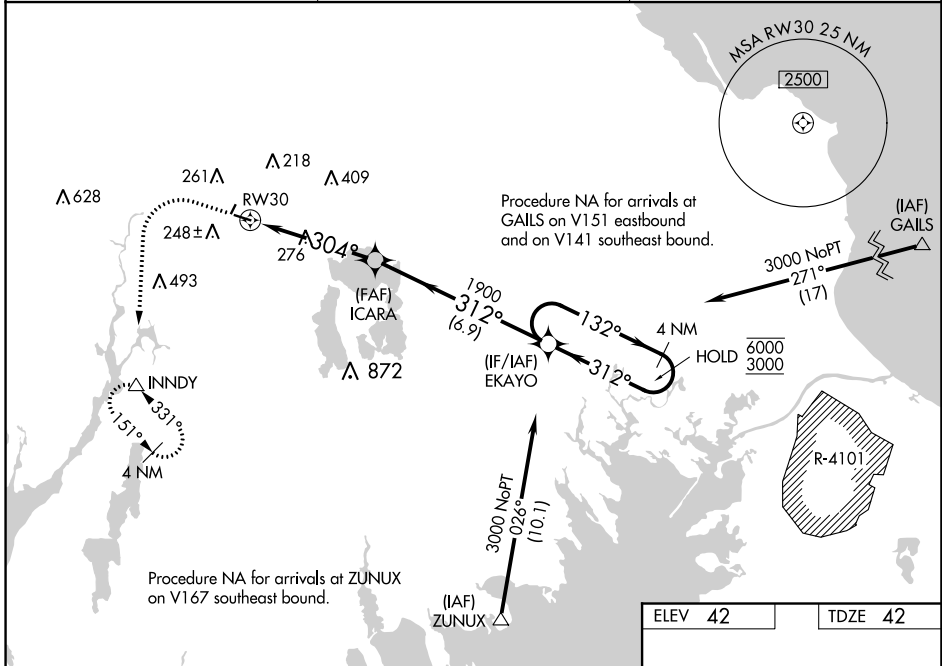
WAAS CH <b>58139</b> <b>W30A</b>	APP CRS <b>304°</b>	Rwy Idg TDZE Apt Elev	<b>3500</b> <b>42</b> <b>42</b>
--	------------------------	-----------------------------	---------------------------------------

# RNAV (GPS) RWY 30

TAUNTON MUNI - KING FLD (TAN)

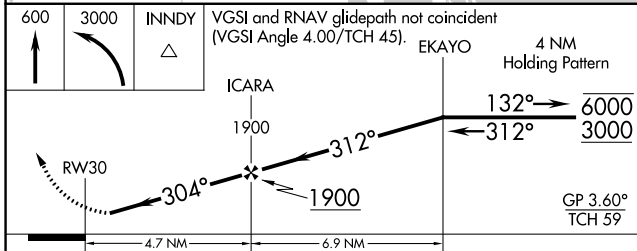
RNP APCH.	MISSED APPROACH: (Do not exceed 210K until INNDY) Climb to 600 then climbing left turn to 3000 direct INNDY and hold. Continue climb in hold to 3000.
<p><b>∇</b> Circling NA to Rws 4 and 22. Rwy 30 helicopter visibility reduction below 1 SM NA. For uncompensated Baro-VNAV systems, LNAV/VNAV NA below -23°C or above 46°C.</p>	

ASOS <b>132.675</b>	PROVIDENCE APP CON * <b>128.7 269.525</b>	UNICOM <b>122.7 (CTAF) 0</b>
------------------------	--	---------------------------------

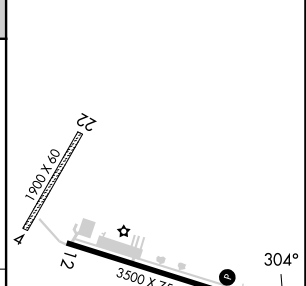


NE-1, 22 FEB 2024 to 21 MAR 2024

NE-1, 22 FEB 2024 to 21 MAR 2024



ELEV 42	TDZE 42
---------	---------



CATEGORY	A	B	C	D
LPV DA	388-1	346 (400-1)		NA
LNAV/VNAV DA	526-1 $\frac{3}{8}$	484 (500-1 $\frac{1}{2}$ )		NA
LNAV MDA	600-1	558 (600-1)	600-1 $\frac{5}{8}$ 558 (600-1 $\frac{1}{2}$ )	NA
<b>C</b> CIRCLING	600-1	558 (600-1)	660-1 $\frac{3}{4}$ 618 (700-1 $\frac{3}{4}$ )	NA

REIL Rwy 30	MIRL Rwy 12-30 <b>0</b>
-------------	-------------------------