

LOC/DME I-TMN 110.1 Chan 38	APP CRS 100°	Rwy Idg 6892 TDZE 24 Apt Elev 24
---	------------------------	---

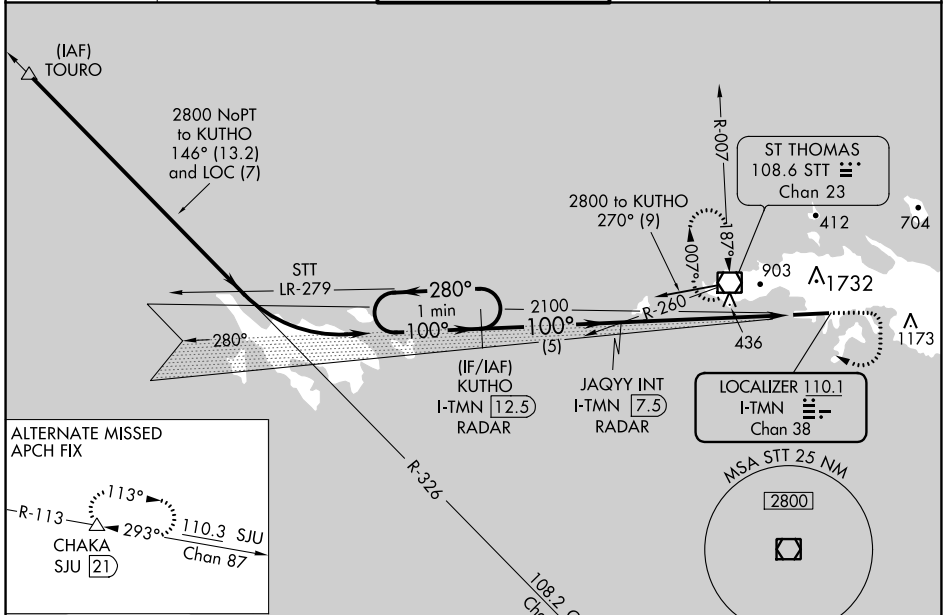
ILS or LOC RWY 10

CYRIL E KING (STT)(TIST)

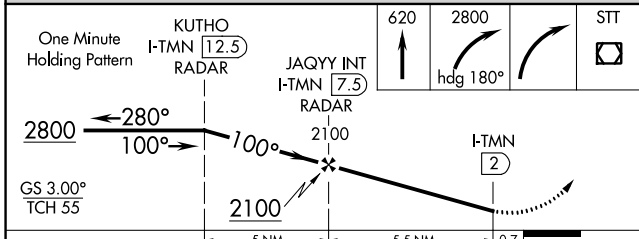
⚠ Circling NA at night.
⚠ Procedure NA when control tower closed.
 Circling NA north of Rwy 10-28.

MISSED APPROACH: Climb to 620 then climbing right turn to 2800 on heading 180° then right turn direct St Thomas VOR/DME and hold.

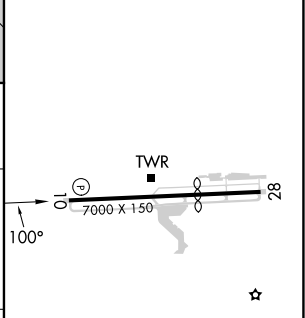
ATIS 124.0	SAN JUAN CENTER 128.65 279.6	ST. THOMAS TOWER ★ 118.8 (CTAF) 0 257.6 118.1 (NORTH OF ISLAND)	GND CON 121.9	UNICOM 122.95
----------------------	--	--	-------------------------	-------------------------



CAUTION: Pilots may encounter false illusory indications during night approaches to Rwy 10 when using outside visual cues for vertical guidance.



ELEV 24	D TDZE 24
---------	------------------



CATEGORY	A	B	C	D
S-ILS 10	415-1 1/8 391 (400-1 1/8)			
S-LOC 10	620-1	596 (600-1)	620-1 3/4	596 (600-1 3/4)
CIRCLING	660-1	700-1	860-2 1/2	1480-3
	636 (700-1)	676 (700-1)	836 (900-2 1/2)	1456 (1500-3)

MIRL Rwy 10-28					
FAF to MAP 5.5 NM					
Knots	60	90	120	150	180
Min:Sec	5:30	3:40	2:45	2:12	1:50

SE-3, 22 FEB 2024 to 21 MAR 2024

SE-3, 22 FEB 2024 to 21 MAR 2024

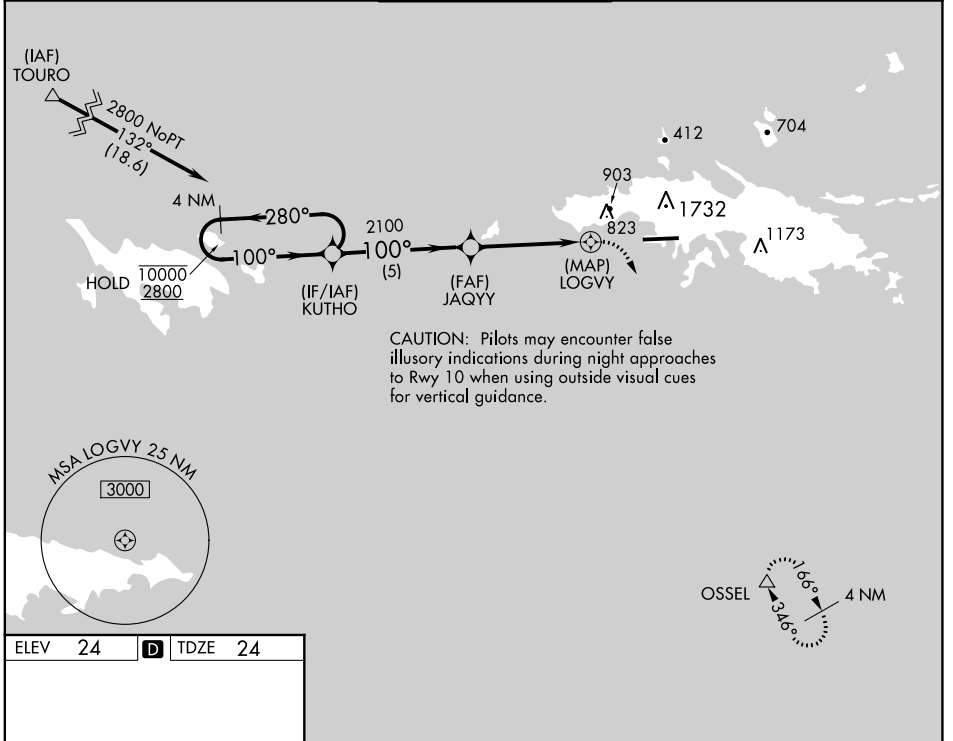
APP CRS 100°	Rwy Idg 6892 TDZE 24 Apt Elev 24
------------------------	---

RNAV (GPS) RWY 10

CYRIL E KING (STT)(TIST)

RNP APCH - GPS.		MISSED APPROACH: Climbing right turn to 2800 direct OSSEL and hold.	
		* Missed approach requires minimum climb of 411 feet per NM to 1900 for Category C/D aircraft.	

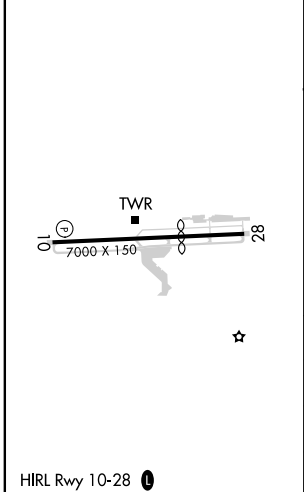
ATIS 124.0	SAN JUAN CENTER 128.65 279.6	ST. THOMAS TOWER ★ 118.8 (CTAF) 0 257.6 118.1 (NORTH OF ISLAND)	GND CON 121.9	UNICOM 122.95
----------------------	--	--	-------------------------	-------------------------



SE-3, 22 FEB 2024 to 21 MAR 2024

SE-3, 22 FEB 2024 to 21 MAR 2024

ELEV	24		TDZE	24
------	----	--	------	----



4 NM Holding Pattern		VGSi and descent angles not coincident (VGSi Angle 3.00/TCH 71).		2800	OSSEL
KUTHO		JAQYY		LOGVY	
10000 ← 280°		100° →		1.4 NM to LOGVY	
2800		2100		TCH 56	
5 NM		2.9 NM		1.4 1.9	
CATEGORY	A	B	C	D	
RNAV MDA*	1180-2½	1156 (1200-2½)	1180-3	1156 (1200-3)	
RNAV MDA	1560-2½	1536 (1600-2½)	1560-3	1536 (1600-3)	
CIRCLING	1560-2½	1536 (1600-2½)	1560-3	1536 (1600-3)	

VOR/DME STT 108.6 Chan 23	APP CRS 181°	Rwy Idg TDZE Apt Elev N/A N/A 24
---	------------------------	---

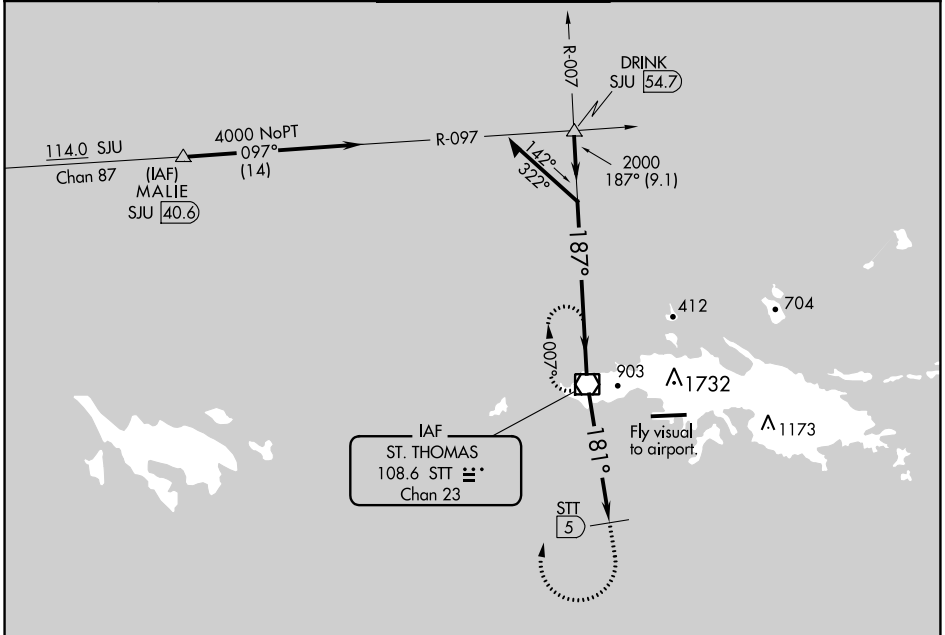
VOR-A

CYRILE KING (STT)(TIST)

CAUTION: High terrain north of Rwy 10-28 extended. Circling NA north of Rwy 10-28. Procedure NA when control tower not in operation. Procedure NA at night.

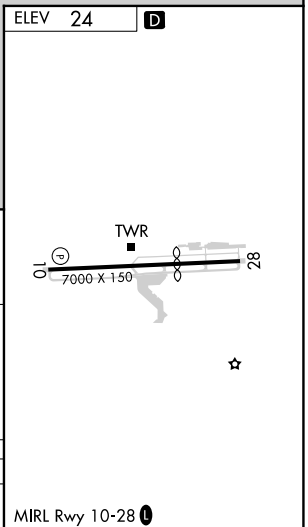
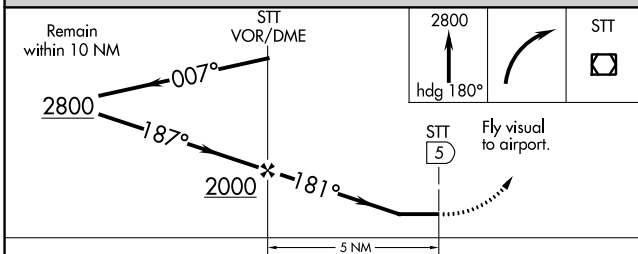
MISSED APPROACH: If unable to proceed visually to airport upon descent to 1160, climb to 2800 via heading 180°, then right turn direct STT VOR/DME and hold.

ATIS 124.0	SAN JUAN CENTER 128.65 279.6	ST. THOMAS TOWER ★ 118.8 (CTAF) 0 257.6 118.1 (NORTH OF ISLAND)	GND CON 121.9	UNICOM 122.95
----------------------	--	--	-------------------------	-------------------------



SE-3, 22 FEB 2024 to 21 MAR 2024

SE-3, 22 FEB 2024 to 21 MAR 2024



CATEGORY	A	B	C	D
CIRCLING	1160-3	1136 (1200-3)		1480-3 1456 (1500-3)