

(ACONY3.ACONY) 19003

LUIS MUNOZ MARIN INTL (SJU)(TJSJ)

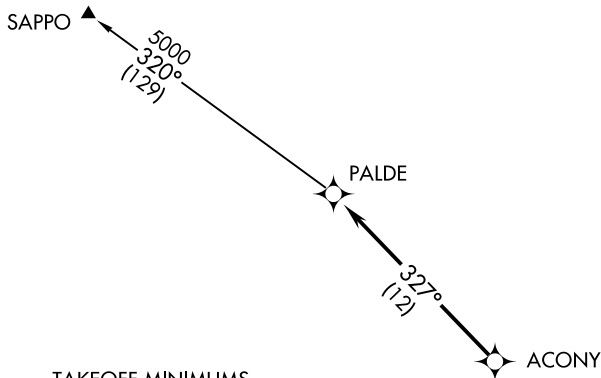
ACONY THREE DEPARTURE (RNAV)

AL-784 (FAA)

SAN JUAN, PUERTO RICO

**TOP ALTITUDE:
5000**

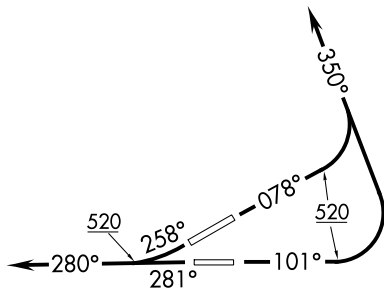
D-ATIS 125.8
 CLNC DEL 126.4 284.6
 CPDLC
 SAN JUAN TOWER 132.05 257.8
 GND CON 121.9 348.6
 SAN JUAN DEP CON 119.4 269.2 (West & SW)
 120.9 290.2 (North & East)



TAKEOFF MINIMUMS

Rwy 8, 10, 26, 28: Standard.

- NOTE: GPS required.
- NOTE: For jet aircraft only.
- NOTE: RNAV 1.
- NOTE: RADAR required.



NOTE: Chart not to scale.

DEPARTURE ROUTE DESCRIPTION

TAKEOFF RWY 8: Climb heading 078° to 520, then climbing left turn heading 350° or as assigned by ATC for vectors to ACONY, then on track 327° to PALDE, thence. . . .

TAKEOFF RWY 10: Climb heading 101° to 520, then climbing left turn heading 350° or as assigned by ATC for vectors to ACONY, then on track 327° to PALDE, thence. . . .

TAKEOFF RWY 26: Climb heading 258° to 520, then climb on heading 280° or as assigned by ATC for vectors to ACONY, then on track 327° to PALDE, thence. . . .

TAKEOFF RWY 28: Climb heading 281° to 520, then climb on heading 280° or as assigned by ATC for vectors to ACONY, then on track 327° to PALDE, thence. . . .

. . . .on SAPPO transition, maintain 5000 unless assigned lower altitude. Expect clearance to FL280, or requested altitude if lower, ten minutes after departure.

SAPPO TRANSITION (ACONY3.SAPPO)

SE-3, 22 FEB 2024 to 21 MAR 2024

SE-3, 22 FEB 2024 to 21 MAR 2024

ACONY THREE DEPARTURE (RNAV)

(ACONY3.ACONY) 03JAN19

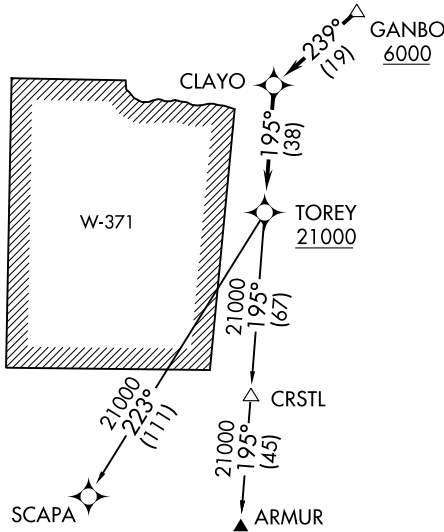
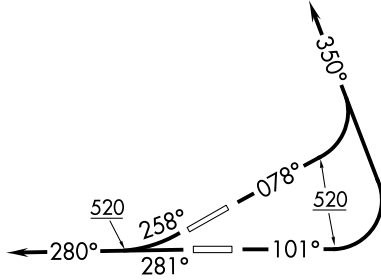
SAN JUAN, PUERTO RICO

LUIS MUNOZ MARIN INTL (SJU)(TJSJ)

(GANBO1.GANBO) 19339
GANBO ONE DEPARTURE (RNAV)

LUIS MUNOZ MARIN INTL (SJU)(TJSJ)
 AL-784 (FAA) SAN JUAN, PUERTO RICO

D-ATIS 125.8
 CLNC DEL
 126.4 284.6
 CPDLC
 SAN JUAN TOWER
 132.05 257.8
 GND CON
 121.9 348.6
 SAN JUAN DEP CON
 119.4 269.2 (West & SW)
 120.9 290.2 (North & East)



TAKEOFF MINIMUMS

Rwys 8, 10, 26, 28: Standard.
 Minimum obstacle climb of 390' per NM to 4900. ATC climb of 420' per NM to 6000.

NOTE: GPS Required.

NOTE: For Turbojet aircraft only.

NOTE: RNAV 1.

NOTE: RADAR required.

NOTE: ATC climb of 264' per NM to 21000.

NOTE: If unable to accept climb rates, advise ATC on initial contact.

NOTE: Chart not to scale.

DEPARTURE ROUTE DESCRIPTION

TAKEOFF RUNWAY 8: Climb heading 078° to 520, then climbing left turn heading 350° or as assigned by ATC, expect vectors to GANBO, then via depicted route to TOREY. Thence. . . .

TAKEOFF RUNWAY 10: Climb heading 101° to 520, then climbing left turn heading 350° or as assigned by ATC, expect vectors to GANBO, then via depicted route to TOREY. Thence. . . .

TAKEOFF RUNWAY 26: Climb heading 258° to 520, continue climb heading 280° or as assigned by ATC, expect vectors to GANBO, then via depicted route to TOREY. Thence. . . .

TAKEOFF RUNWAY 28: Climb heading 281° to 520, continue climb heading 280° or as assigned by ATC, expect vectors to GANBO, then via depicted route to TOREY. Thence. . . .

. . . .via assigned transition. Maintain 5000 unless assigned lower altitude. Expect clearance to FL280, or requested altitude if lower, ten minutes after departure.

ARMUR TRANSITION (GANBO1.ARMUR):

SCAPA TRANSITION (GANBO1.SCAPA):

GANBO ONE DEPARTURE (RNAV)
 (GANBO1.GANBO) 27AUG09

SAN JUAN, PUERTO RICO
 LUIS MUNOZ MARIN INTL (SJU)(TJSJ)

SE-3, 22 FEB 2024 to 21 MAR 2024

SE-3, 22 FEB 2024 to 21 MAR 2024

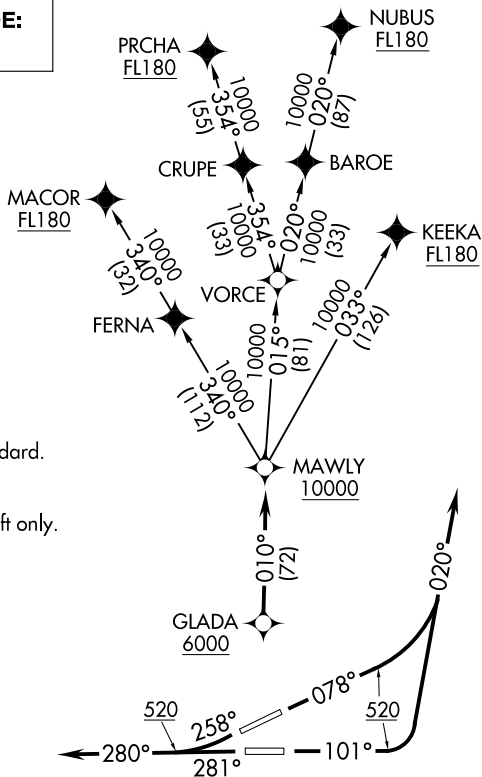
GLADA THREE DEPARTURE (RNAV)

AL-784 (FAA)

SAN JUAN, PUERTO RICO

D-ATIS 125.8
 CLNC DEL 126.4 284.6
 CPDLC
 SAN JUAN TOWER 132.05 257.8
 GND CON 121.9 348.6
 SAN JUAN DEP CON 119.4 269.2 (West & SW)
 120.9 290.2 (North & East)

TOP ALTITUDE:
5000



TAKE-OFF MINIMUMS
 Rwy 8, 10, 26, 28: Standard.

NOTE: GPS required.
 NOTE: For Turbojet aircraft only.
 NOTE: RNAV 1.
 NOTE: RADAR required.

NOTE: Chart not to scale.

DEPARTURE ROUTE DESCRIPTION

- TAKEOFF RUNWAY 8:** Climb heading 078° to 520, then climbing left turn heading 020° or as assigned by ATC, expect vectors to GLADA, then via 010° track to MAWLY. Thence. . . .
- TAKEOFF RUNWAY 10:** Climb heading 101° to 520, then climbing left turn heading 020° or as assigned by ATC, expect vectors to GLADA, then via 010° track to MAWLY. Thence. . . .
- TAKEOFF RUNWAY 26:** Climb heading 258° to 520, continue climb heading 280° or as assigned by ATC, expect vectors to GLADA, then via 010° track to MAWLY. Thence. . . .
- TAKEOFF RUNWAY 28:** Climb heading 281° to 520, continue climb heading 280° or as assigned by ATC, expect vectors to GLADA, then via 010° track to MAWLY. Thence. . . .

. . . . via assigned transition. Maintain 5000 unless assigned lower altitude. Expect clearance to FL200, or requested altitude if lower, ten minutes after departure.

- KEEKA TRANSITION (GLADA3.KEEKA)
- MACOR TRANSITION (GLADA3.MACOR)
- NUBUS TRANSITION (GLADA3.NUBUS)
- PRCHA TRANSITION (GLADA3.PRCHA)

SE-3, 22 FEB 2024 to 21 MAR 2024

SE-3, 22 FEB 2024 to 21 MAR 2024

(HAMAR2.HAMAR) 17285

HAMAR TWO DEPARTURE (RNAV)

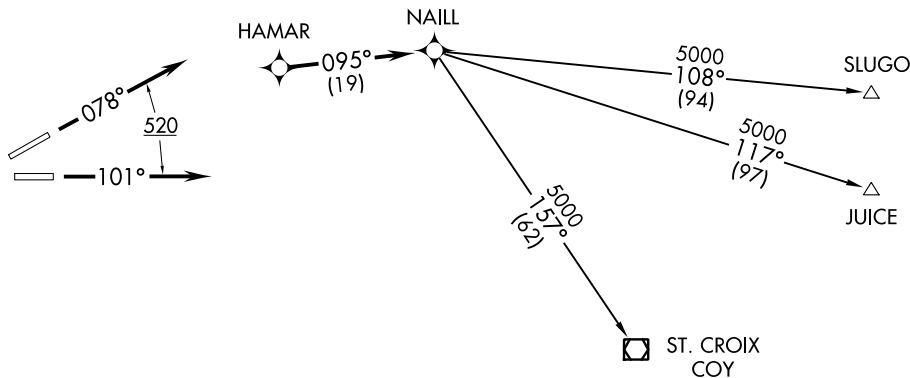
LUIS MUNOZ MARIN INTL (SJU)(TJSJ)

AL-784 (FAA)

SAN JUAN, PUERTO RICO

D-ATIS 125.8
 CLNC DEL
 126.4 284.6
 CPDLC
 SAN JUAN TOWER
 132.05 257.8
 GND CON
 121.9 348.6
 SAN JUAN DEP CON
 119.4 269.2 (West & SW)
 120.9 290.2 (North & East)

TOP ALTITUDE:
5000



TAKE-OFF MINIMUMS

Rwy 8, 10: Standard. ATC climb of 230' per NM to 5000.

Rwy 26, 28: NA-ATC.

NOTE: GPS required.

NOTE: For Prop and Turboprop aircraft only.

NOTE: RNAV 1.

NOTE: RADAR required.

NOTE: Chart not to scale.



DEPARTURE ROUTE DESCRIPTION

TAKEOFF RUNWAY 8: Climb heading 078° to 520, continue climb expect vectors to HAMAR, then via 095° track to NAILL. Thence. . . .

TAKEOFF RUNWAY 10: Climb heading 101° to 520, continue climb expect vectors to HAMAR, then via 095° track to NAILL. Thence. . . .

. . . . via assigned transition. Maintain 5000 unless assigned lower altitude. Expect clearance to FL280, or requested altitude if lower, ten minutes after departure.

JUICE TRANSITION (HAMAR2.JUICE)

SLUGO TRANSITION (HAMAR2.SLUGO)

ST. CROIX TRANSITION (HAMAR2.COY)

HAMAR TWO DEPARTURE (RNAV)

(HAMAR2.HAMAR) 10DEC15

SAN JUAN, PUERTO RICO

LUIS MUNOZ MARIN INTL (SJU)(TJSJ)

SE-3, 22 FEB 2024 to 21 MAR 2024

SE-3, 22 FEB 2024 to 21 MAR 2024

JAAWS TWO DEPARTURE

AL-784 (FAA)

LUIS MUNOZ MARIN INTL (SJU)(TJSJ)

SAN JUAN, PUERTO RICO

**TOP ALTITUDE:
5000**

UTAHS
N19°41.43'
W67°17.21'

105

325°
(60)

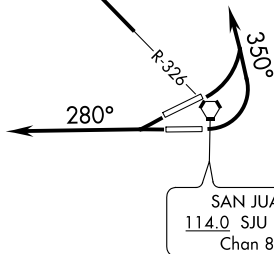
JAAWS
N18°58.70'
W66°32.44'

326°
(45)

280°

D-ATIS
125.8
SAN JUAN TOWER
132.05 257.8
GND CON
121.9 348.6
CLNC DEL
126.4 284.6
CPDLC
SAN JUAN DEP CON
119.4 269.2 (West & SW)
120.9 290.2 (North & East)

TAKEOFF MINIMUMS
Rwys 8, 10, 26, 28: Standard.



- NOTE: RADAR required.
- NOTE: DME or GPS required.
- NOTE: Turbojets only.

NOTE: Chart not to scale.

DEPARTURE ROUTE DESCRIPTION

TAKEOFF RUNWAYS 8, 10: Climbing left turn heading 350° for RADAR vector to intercept SJU VORTAC R-326 to UTAHS. Thence. . . .

TAKEOFF RUNWAYS 26, 28: Climb heading 280° for RADAR vector to intercept SJU VORTAC R-326 to UTAHS. Thence. . . .

. . . .maintain 5000 unless assigned lower altitude. Expect clearance to FL280, or requested altitude if lower, ten minutes after departure.

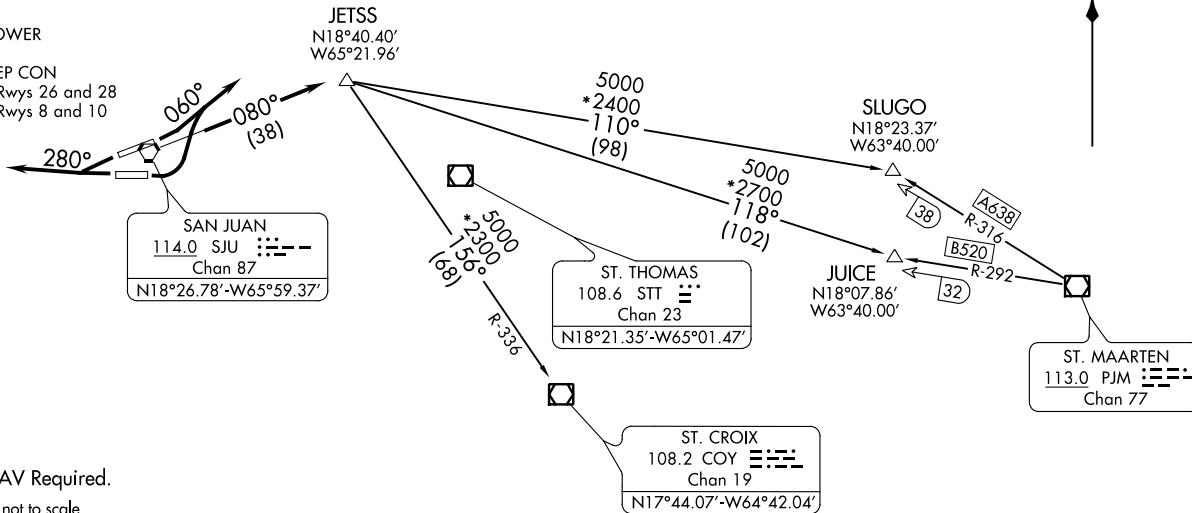
JAAWS TWO DEPARTURE

SE-3, 22 FEB 2024 to 21 MAR 2024

SE-3, 22 FEB 2024 to 21 MAR 2024

JETSS ONE DEPARTURE
(JETSS1 .JETSS) 100CT96

D-ATIS 125.8
CLNC DEL
126.4 284.6
CPDLC
GND CON
121.9 348.6
SAN JUAN TOWER
132.05 257.8
SAN JUAN DEP CON
119.4 269.2 Rwys 26 and 28
120.9 290.2 Rwys 8 and 10



NOTE: RNAV Required.

NOTE: Chart not to scale.



DEPARTURE ROUTE DESCRIPTION

TAKE-OFF RUNWAYS 8 AND 10: Turn left heading 060° for vector to intercept SJU R-080 to JETSS INT. Thence....

TAKE-OFF RUNWAYS 26 AND 28: Fly heading 280° for vector to intercept SJU R-080 to JETSS INT. Thence....

....Maintain 5000' unless assigned lower altitude. Expect clearance to FL 280 or requested altitude, if lower, ten (10) minutes after departure.

JUICE TRANSITION (JETSS1 .JUICE): From over JETSS INT direct to JUICE DME. Thence as filed.

SLUGO TRANSITION (JETSS1 .SLUGO): From over JETSS INT direct to SLUGO DME. Thence as filed.

ST. CROIX TRANSITION (JETSS1 .COY): From over JETSS INT direct to COY VOR/DME. Thence as filed.

(JETSS1 .JETSS) 17173
JETSS ONE DEPARTURE

AL-784 (FAA)

LUIS MUNOZ MARIN INTL (SJU)(TJSJ)
SAN JUAN, PUERTO RICO

SAN JUAN, PUERTO RICO
LUIS MUNOZ MARIN INTL (SJU)(TJSJ)

(SNGRA2.SNGRA) 17285

SNGRA TWO DEPARTURE (RNAV)

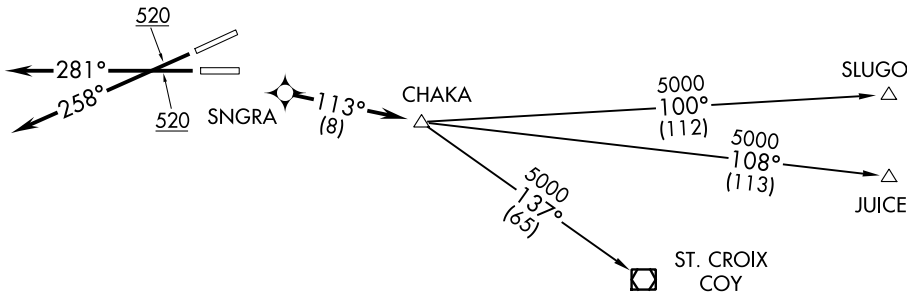
LUIS MUNOZ MARIN INTL (SJU)(TJSJ)

AL-784 (FAA)

SAN JUAN, PUERTO RICO

D-ATIS 125.8
 CLNC DEL
 126.4 284.6
 CPDLC
 SAN JUAN TOWER
 132.05 257.8
 GND CON
 121.9 348.6
 SAN JUAN DEP CON
 119.4 269.2 (West & SW)
 120.9 290.2 (North & East)

TOP ALTITUDE:
5000



TAKE-OFF MINIMUMS

Rwy 8, 10: NA-ATC.

Rwy 26: Standard with minimum obstacle climb of 311' per NM to 4800. ATC climb of 350' per NM to 5000.

Rwy 28: Standard with minimum obstacle climb of 323' per NM to 4800. ATC climb of 350' per NM to 5000.

NOTE: GPS required.

NOTE: For Prop and Turboprop aircraft only.

NOTE: RNAV 1.

NOTE: RADAR required.

NOTE: Chart not to scale.



DEPARTURE ROUTE DESCRIPTION

TAKEOFF RUNWAY 26: Climb heading 258° to 520, continue climb expect vectors to SNGRA, then via 113° track to CHAKA. Thence. . . .

TAKEOFF RUNWAY 28: Climb heading 281° to 520, continue climb expect vectors to SNGRA, then via 113° track to CHAKA. Thence. . . .

. . . . via assigned transition. Maintain 5000 unless assigned lower altitude. Expect clearance to FL280, or requested altitude if lower, ten minutes after departure.

JUICE TRANSITION (SNGRA2.JUICE)

SLUGO TRANSITION (SNGRA2.SLUGO)

ST. CROIX TRANSITION (SNGRA2.COY)

SNGRA TWO DEPARTURE (RNAV)

(SNGRA2.SNGRA) 10DEC15

SAN JUAN, PUERTO RICO

LUIS MUNOZ MARIN INTL (SJU)(TJSJ)

SE-3, 22 FEB 2024 to 21 MAR 2024

SE-3, 22 FEB 2024 to 21 MAR 2024

(VERMO6.VERMO) 20086

VERMO SIX DEPARTURE

AL-784 (FAA)

LUIS MUNOZ MARIN INTL (SJU)(TJSJ)

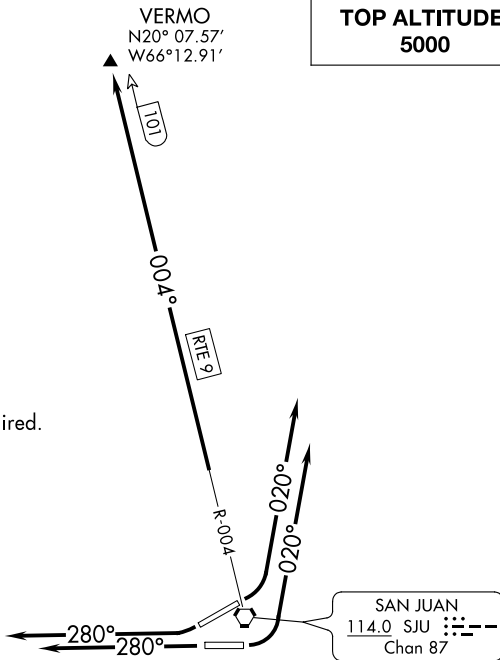
SAN JUAN, PUERTO RICO

D-ATIS
125.8
SAN JUAN TOWER
132.05 257.8
GND CON
121.9 348.6
CLNC DEL
126.4 284.6
CPDLC
SAN JUAN DEP CON
119.4 269.2 (West & SW)
120.9 290.2 (North & East)

**TOP ALTITUDE:
5000**

VERMO
N20° 07.57'
W66° 12.91'

NOTE: RADAR required.
NOTE: DME or GPS required.



TAKEOFF MINIMUMS
Rwys 8, 10, 26, 28: Standard.

NOTE: Chart not to scale.

DEPARTURE ROUTE DESCRIPTION

TAKEOFF RUNWAY 8: Climb on heading 020° or as assigned by ATC for vectors to intercept SJU VORTAC R-004 to VERMO/101 DME. Thence. . . .

TAKEOFF RUNWAY 10: Climb on heading 020° or as assigned by ATC for vectors to intercept SJU VORTAC R-004 to VERMO/101 DME. Thence. . . .

TAKEOFF RUNWAY 26: Climb on heading 280° or as assigned by ATC for vectors to intercept SJU VORTAC R-004 to VERMO/101 DME. Thence. . . .

TAKEOFF RUNWAY 28: Climb on heading 280° or as assigned by ATC for vectors to intercept SJU VORTAC R-004 to VERMO/101 DME. Thence. . . .

. . . . maintain 5000 unless assigned lower altitude. Expect clearance to FL280, or requested altitude if lower, ten minutes after departure.

VERMO SIX DEPARTURE

(VERMO6.VERMO) 26MAR20

SAN JUAN, PUERTO RICO
LUIS MUNOZ MARIN INTL (SJU)(TJSJ)

SE-3, 22 FEB 2024 to 21 MAR 2024

SE-3, 22 FEB 2024 to 21 MAR 2024