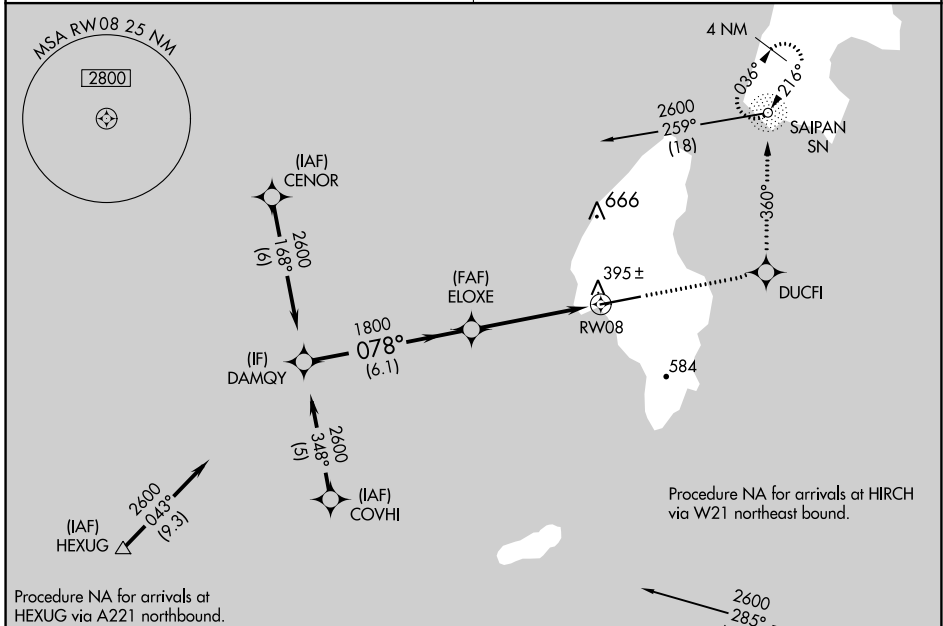


APP CRS	Rwy Idg	8600
078°	TDZE	243
	Apt Elev	270

RNAV (GPS) RWY 8

FRANCISCO MANGLONA BORJA/TINIAN INTL (TNI)(PGWT)

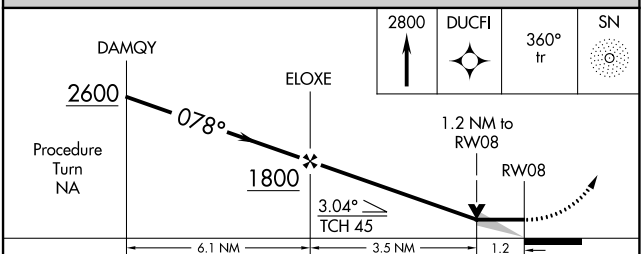
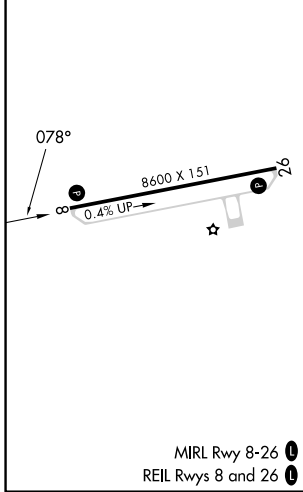
RNP APCH	Obtain local altimeter setting on CTAF; when not received, use Saipan altimeter setting. VDP NA when using Saipan altimeter setting.	MISSED APPROACH: Climb to 2800 direct DUCFI and via 360° track to SN NDB and hold, continue climb-in-hold to 2800.
GUAM CERAP	118.4 290.5	SAIPAN RADIO 123.6 (CTAF)



Procedure NA for arrivals at HEXUG via A221 northbound.

Procedure NA for arrivals at HIRCH via W21 northeast bound.

ELEV 270	D	TDZE 243
----------	----------	----------



CATEGORY	A	B	C	D
LNAV MDA	660-1	417 (400-1)	660-1¼	417 (400-1¼)
C CIRCLING	760-1 490 (500-1)	860-1 590 (600-1)	1000-2 730 (800-2)	1060-2½ 790 (800-2½)
SAIPAN ALTIMETER SETTING MINIMUMS				
LNAV MDA	680-1	437 (500-1)	680-1¼	437 (500-1¼)
C CIRCLING	800-1 530 (600-1)	900-1 630 (700-1)	1040-2¼ 770 (800-2¼)	1100-2¾ 830 (900-2¾)

MIRL Rwy 8-26 **1**
REIL Rwy 8 and 26 **1**

RNAV (GPS) RWY 8

PAC, 25 JAN 2024 to 21 MAR 2024

PAC, 25 JAN 2024 to 21 MAR 2024