

TYLER, TEXAS

AL-622 (FAA)

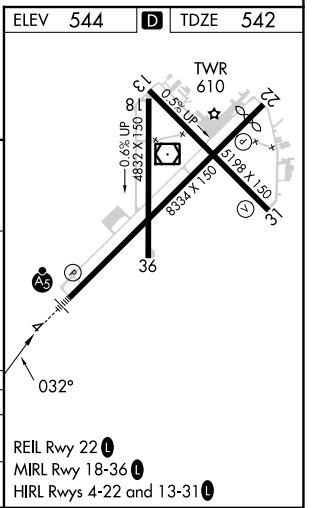
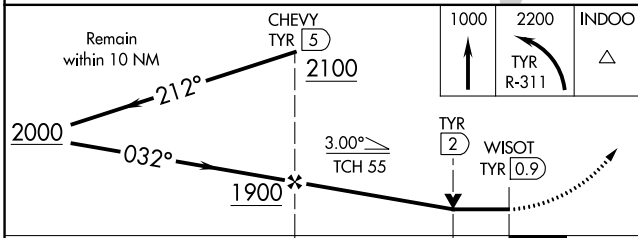
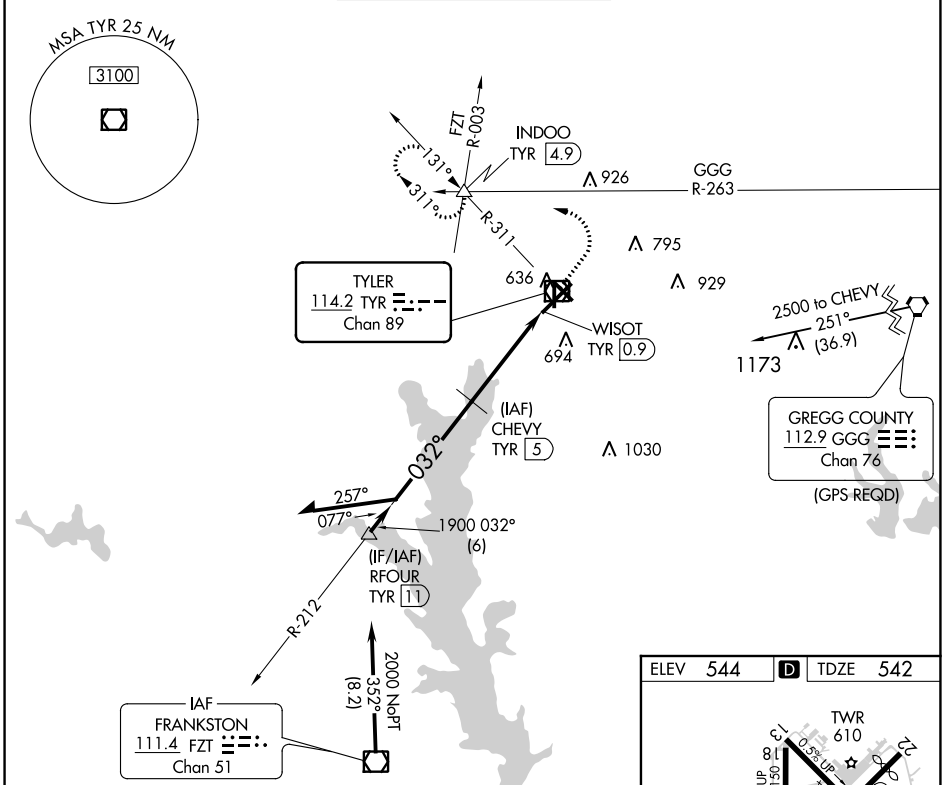
23278

VOR/DME TYR 114.2 Chan 89	APP CRS 032°	Rwy Idg TDZE 542 Apt Elev 544	7734
---	------------------------	---	-------------

VOR RWY 4

TYLER POUNDS RGNL (TYR)

DME required. ▼ For inop ALS, increase Cat C/D visibility to 1 1/8 SM. ▲		MALSR AS	MISSED APPROACH: Climb to 1000 then climbing left turn to 2200 on TYR VOR/DME R-311 to INDOO INT/TYR 4.9 DME and hold.		
ATIS 126.25	LONGVIEW APP CON * 128.75 379.15	POUNDS TOWER * 120.1 (CTAF) 257.8		GND CON 121.9	UNICOM 122.95



CATEGORY	A	B	C	D
S-4	940-1/2 398 (400-1/2)		940-3/4 398 (400-3/4)	
CIRCLING	980-1 436 (500-1)	1020-1 476 (500-1)	1160-1 3/4 616 (700-1 3/4)	1280-2 1/4 736 (800-2 1/4)

TYLER, TEXAS
Amdt 5C 20APR23

32°21'N-95°24'W

TYLER POUNDS RGNL (TYR)
VOR RWY 4

SC-2, 22 FEB 2024 to 21 MAR 2024

SC-2, 22 FEB 2024 to 21 MAR 2024