

NDB HCY 257	APP CRS 080°	Rwy Idg 5200
		TDZE 4086
		Apt Elev 4094

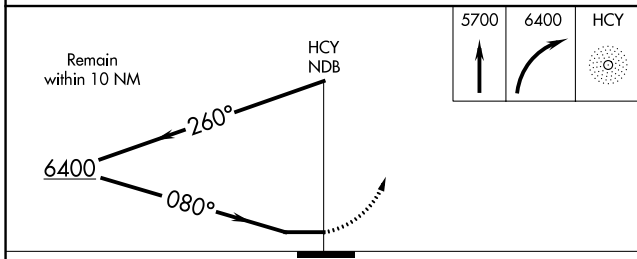
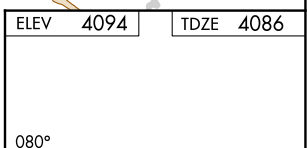
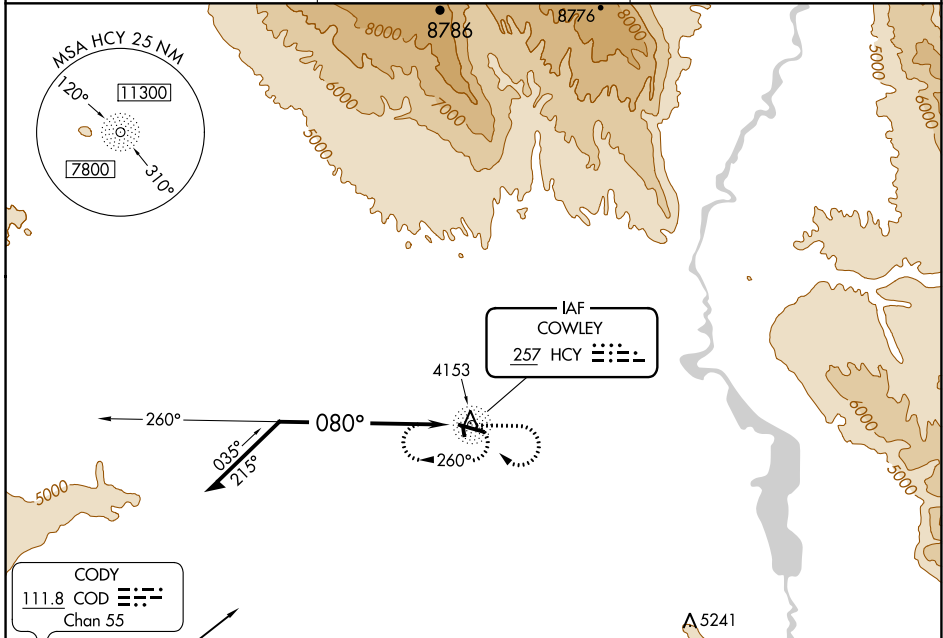
NDB RWY 9

NORTH BIG HORN COUNTY (U68)

⚠ When Rwy 9 VGS1 inoperative, Straight-in and Circling Rwy 9 minimums NA at night.
⚠ NA When local altimeter setting not received, use Greybull altimeter setting and increase Circling Cats A/B/C MDA 80 feet and Circling Cat D MDA 100 feet. Helicopter visibility reduction below 1 SM not authorized. Circling NA to Rwys 16 and 34.

MISSED APPROACH: Climb to 5700 then climbing right turn to 6400 direct HCY NDB and hold.

AWOS-3 119.925	SALT LAKE CENTER 133.25 285.6	UNICOM 123.0 (CTAF) 0
--------------------------	---	---------------------------------



CATEGORY	A	B	C	D
S-9	5200-1¼ 1114 (1200-1¼)	5200-1½ 1114 (1200-1½)	5200-3	1114 (1200-3)
C CIRCLING	5200-1¼ 1106 (1200-1¼)	5200-1½ 1106 (1200-1½)	5200-3 1106 (1200-3)	5260-3 1166 (1200-3)

REIL Rwys 9 and 27 0
 MRL Rwy 9-27 0

NW-1, 22 FEB 2024 to 21 MAR 2024

NW-1, 22 FEB 2024 to 21 MAR 2024