

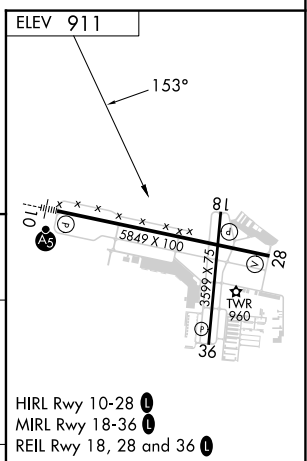
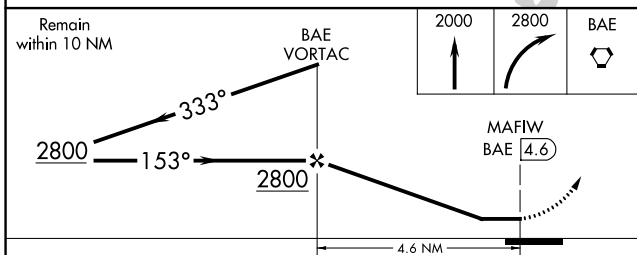
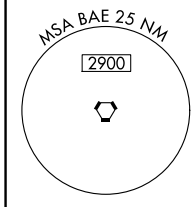
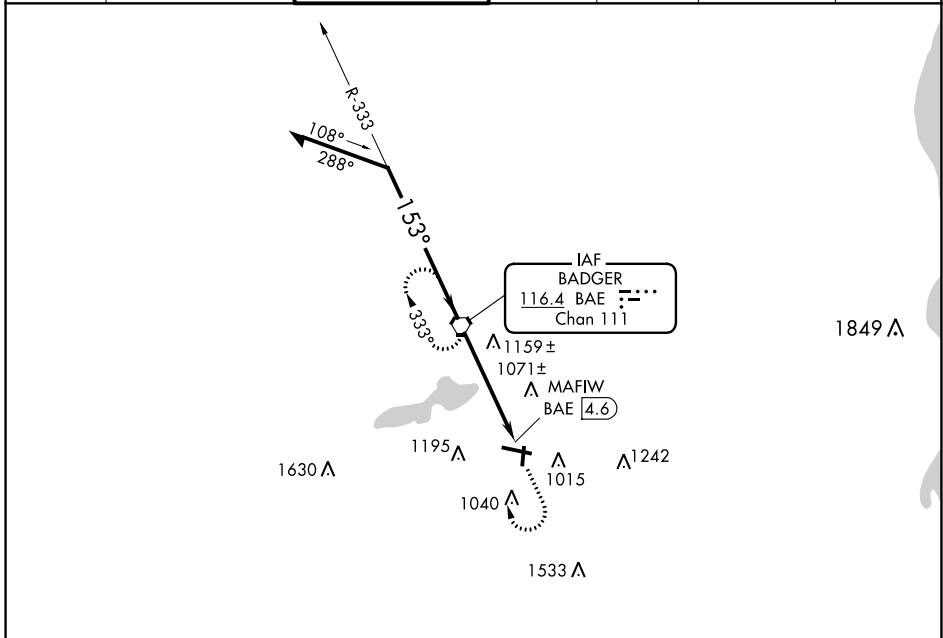
VORTAC BAE <b>116.4</b> Chan <b>111</b>	APP CRS <b>153°</b>	Rwy Idg TDZE Apt Elev <b>N/A</b> <b>N/A</b> <b>911</b>
---	------------------------	---

**VOR-A**

WAUKESHA COUNTY (U/S)

<p><b>▼</b> When local altimeter setting not received, use Lawrence J Timmerman altimeter setting; increase all MDAs 60 feet and increase Circling Cat C and D visibility ¼ SM.</p> <p><b>▲</b></p>	<p>MISSED APPROACH: Climb to 2000, then climbing right turn to 2800 direct BAE VORTAC and hold.</p>
---	---

ATIS <b>118.875</b>	MILWAUKEE APP CON <b>125.35 307.0</b>	WAUKESHA TOWER ★ <b>123.7</b> (CTAF) <b>0</b>	GND CON <b>121.6</b>	CLNC DEL <b>121.6</b>	CLNC DEL <b>128.7</b> (When twr closed)	UNICOM <b>122.95</b>
------------------------	--	--	-------------------------	--------------------------	---	-------------------------



HIRL Rwy 10-28 <b>0</b>
MIRL Rwy 18-36 <b>0</b>
REIL Rwy 18, 28 and 36 <b>0</b>

CATEGORY	A	B	C	D	FAF to MAP 4.6 NM					
CIRCLING	1460-1 549 (600-1)	1500-1 589 (600-1)	1540-1¾ 629 (700-1¾)	1640-2¼ 729 (800-2¼)	Knots	60	90	120	150	180
					Min:Sec	4:36	3:04	2:18	1:50	1:32

**VOR-A**

EC-3, 22 FEB 2024 to 21 MAR 2024

EC-3, 22 FEB 2024 to 21 MAR 2024