

WAAS CH <b>45545</b> <b>W31A</b>	APP CRS <b>308°</b>	Rwy ldg <b>9111</b> TDZE <b>106</b> Apt Elev <b>115</b>
--	------------------------	---

# RNAV (GPS) RWY 31

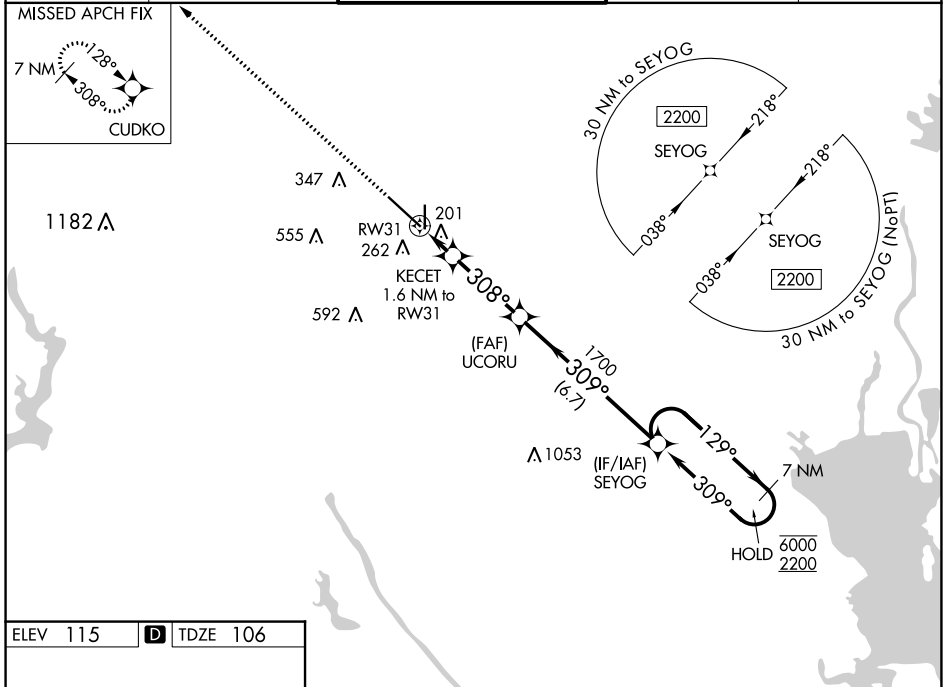
VICTORIA RGNL (VCT)

RNP APCH-GPS.

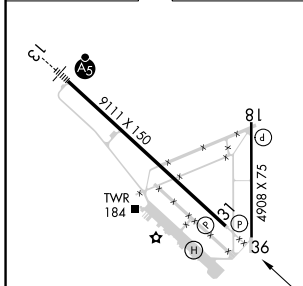
**⚠** For uncompensated Baro-VNAV systems, procedure NA below -15°C or above 54°C.

MISSED APPROACH:  
Climb to 2200 direct  
CUDKO and hold.

ATIS <b>119.025</b>	HOUSTON CENTER <b>135.05 353.6</b>	VICTORIA TOWER ★ <b>126.075 (CTAF) 257.95</b>	GND CON <b>120.525 239.25</b>	UNICOM <b>122.7</b>
------------------------	---------------------------------------	--	----------------------------------	------------------------



ELEV 115	<b>D</b>	TDZE 106
----------	----------	----------



		2200	CUDKO		SEYOG	7 NM Holding Pattern			
				KEKET 1.6 NM to RW31	UCORU 1700		129° → 6000	← 309° 2200	
				1 NM to RW31				GP 3.00° TCH 55	
				RW31					
				1 NM	0.6	3.2 NM	6.7 NM		
CATEGORY		A		B		C		D	E
LPV DA				306- <sup>3</sup> / <sub>4</sub>		200 (200- <sup>3</sup> / <sub>4</sub> )			
LNAV/VNAV DA				374- <sup>7</sup> / <sub>8</sub>		268 (300- <sup>7</sup> / <sub>8</sub> )			
LNAV MDA				460-1		354 (400-1)			
<b>C</b> CIRCLING		580-1	465 (500-1)		820-2	880-2½	765 (800-2½)		NA

MIRL Rwy 18-36  
REIL Rwy 18 and 36  
HIRL Rwy 13-31 **Ⓛ**

SC-5, 22 FEB 2024 to 21 MAR 2024

SC-5, 22 FEB 2024 to 21 MAR 2024