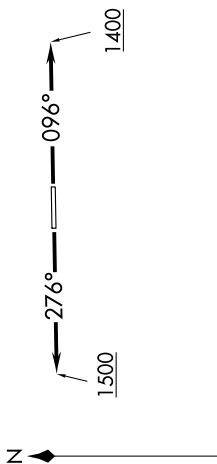


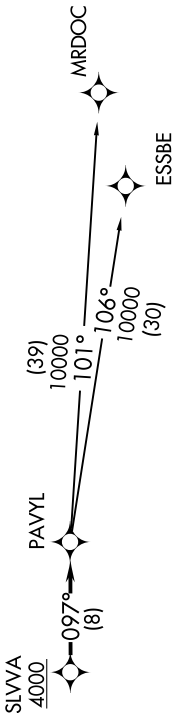
EC-1, 22 FEB 2024 to 21 MAR 2024

**TOP ALTITUDE:  
ASSIGNED BY ATC**



AWOS-3  
119.475  
CTAF  
123.05  
DETROIT DEP CON  
132.35 284.0

NOTE: RNAV 1.  
NOTE: RADAR required.  
NOTE: DME/DME/IRU or GPS required.  
NOTE: Turboplet departures at/above 10000, maintain 280K until advised by ATC.



TAKEOFF MINIMUMS:

Rwy 9: Standard.  
Rwy 27: Standard with minimum climb of 476' per NM to 1500.

NOTE: Chart not to scale.

**DEPARTURE ROUTE DESCRIPTION**

TAKEOFF RUNWAY 9: Climb on heading 096° to 1400 then as assigned for RADAR vectors to cross SLVVA at or above 4000, thence...  
TAKEOFF RUNWAY 27: Climb on heading 276° to 1500 then as assigned for RADAR vectors to cross SLVVA at or above 4000, thence...

....on track 097° to PAVYL, then on (transition). Maintain ATC assigned altitude, expect filed altitude 10 minutes after departure.

ESSBE TRANSITION (PAVYL2.ESSBE):  
MRDOC TRANSITION (PAVYL2.MRDOC):

EC-1, 22 FEB 2024 to 21 MAR 2024