

APP CRS	Rwy Idg	<b>2420</b>
<b>190°</b>	TDZE	<b>168</b>
	Apt Elev	<b>168</b>

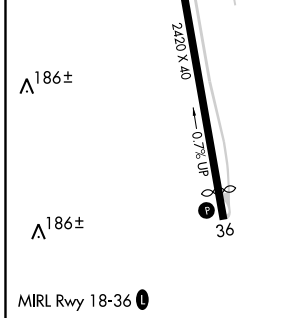
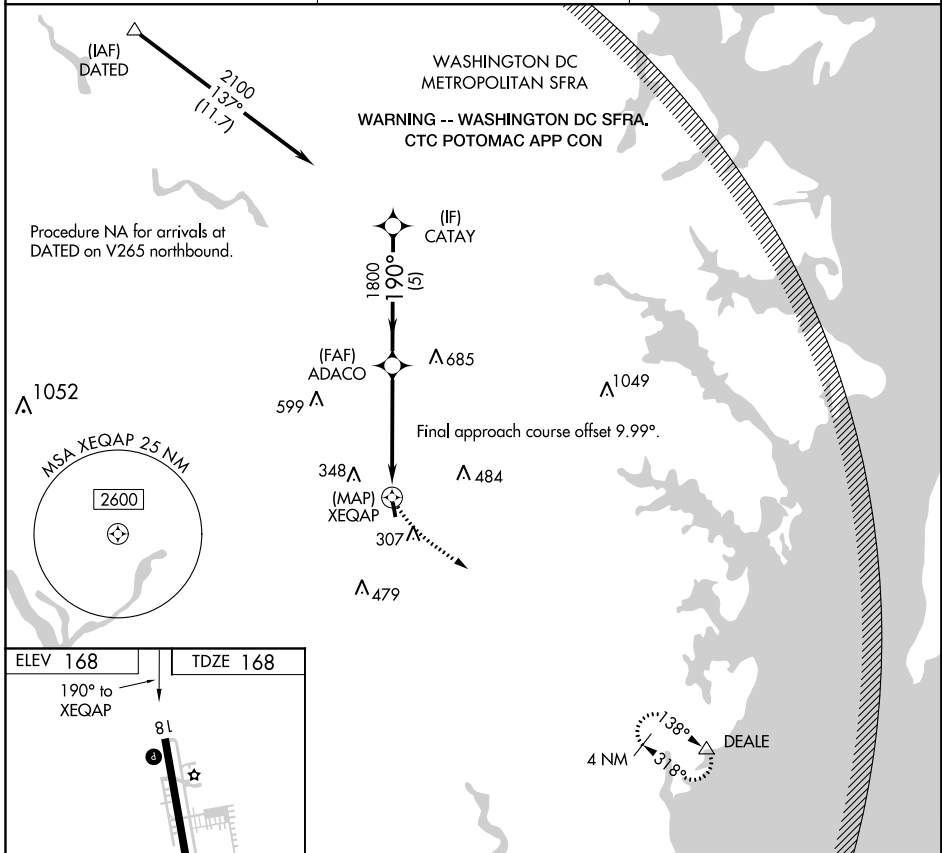
# RNAV (GPS) RWY 18

FREEWAY (W00)

**⚠** Rwy 18 helicopter visibility reduction below 1 SM NA. DME/DME RNP-0.3 NA.  
**⚠** NA Procedure NA at night. Use Fort Meade (Odenton) altimeter setting; when not received, use College Park altimeter setting and increase all MDA 20 feet.

MISSED APPROACH: Climbing left turn to 2000 direct DEALE and hold.

FME AWOS-3 <b>123.925</b>	POTOMAC APP CON <b>128.0 335.5</b>	UNICOM <b>123.075 (CTAF) 0</b>
------------------------------	---------------------------------------	-----------------------------------



2000	DEALE	Visual Segment - Obstacles.	CATAY
	△		
	XEQAP	ADACO	2100
		1800	
	0.3	4.7 NM	5 NM
CATEGORY	A	B	C D
LNAV MDA	760-1	592 (600-1)	NA
<b>C</b> CIRCLING	760-1	592 (600-1)	NA

NE-3, 02 DEC 2021 to 30 DEC 2021

NE-3, 02 DEC 2021 to 30 DEC 2021

APP CRS	Rwy Idg	<b>2190</b>
<b>344°</b>	TDZE	<b>168</b>
	Apt Elev	<b>168</b>

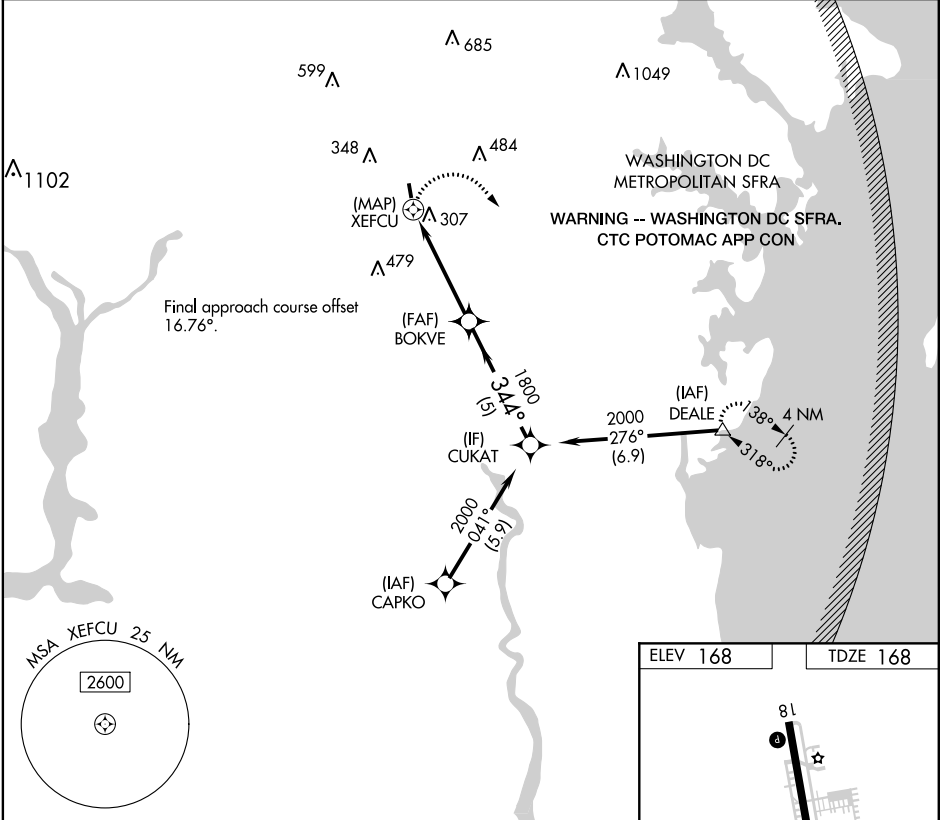
# RNAV (GPS) RWY 36

FREEWAY (W00)

RNP APCH.	Procedure NA at night. Rwy 36 helicopter visibility reduction below 1 SM NA. Use Fort Meade (Odenton) altimeter setting; when not received, use College Park altimeter setting and increase all MDAs 20 feet.
-----------	---

MISSED APPROACH: Climbing right turn to 2000 direct DEALE and hold.

FME AWOS-3 <b>123.925</b>	POTOMAC APP CON <b>128.0 335.5</b>	UNICOM <b>123.075 (CTAF) 0</b>
------------------------------	---------------------------------------	-----------------------------------



NE-3, 02 DEC 2021 to 30 DEC 2021

NE-3, 02 DEC 2021 to 30 DEC 2021

2000	DEALE	Visual Segment-Obstacles.	CUKAT	
	△			
CATEGORY	A	B	C	D
LNVA MDA	700-1	532 (600-1)	NA	NA
CIRCLING	700-1 532 (600-1)	760-1 592 (600-1)	NA	NA

