

TIKEE THREE ARRIVAL (RNAV)
(TIKEE.TIKEE3) 21JUL16

POTOMAC APP CON
120.45 306.925
DCA D-ATIS
132.65
KADW D-ATIS
133.675 251.05
*KDAATIS
128.175

ARRIVAL ROUTE DESCRIPTION

BBONE TRANSITION (BBONE.TIKEE3):
KESSEL TRANSITION (ESL.TIKEE3):
SEALZ TRANSITION (SEALZ.TIKEE3):

All aircraft types landing HEF, 2VG2, NYG, RMN, HWY, CJR, EZF: From TIKEE on track 090° to JETIS, then on heading 090° or as assigned by ATC. Expect RADAR vectors to final approach course.

Props and Turboprop aircraft landing DAA, W00, VKX, ADW, 2W5, DCA, W32: From TIKEE on track 122° to GILFF, then on heading 090° to HIGPO, then on heading 090° or as assigned by ATC. Expect RADAR vectors to final approach course.

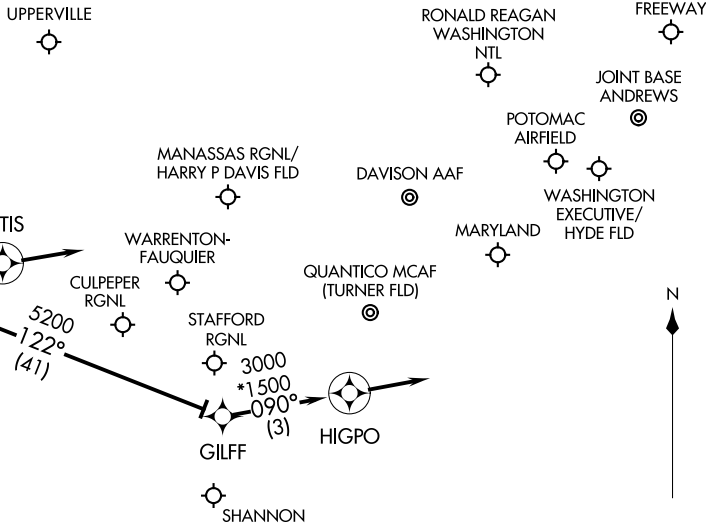
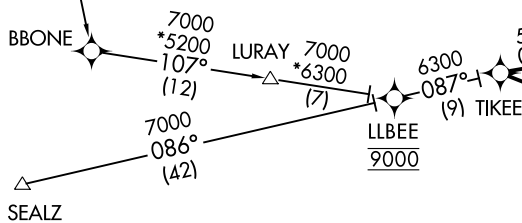
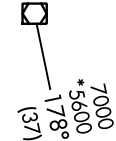
(TIKEE.TIKEE3) 21336
TIKEE THREE ARRIVAL (RNAV)

AL-443 (FAA)

WASHINGTON, DC

- NOTE: RADAR required.
- NOTE: RNAV 1.
- NOTE: DME/DME/IRU or GPS required.
- NOTE: Procedure available to all type aircraft landing the following airports: 2VG2, CJR, HWY, HEF, RMN, EZF, NYG.
- NOTE: Props or Turboprop aircraft only landing the following airports: DAA, 2W5, VKX, W32, W00, DCA, ADW.

KESSEL
ESL
FL190



NOTE: Chart not to scale

WASHINGTON, DC