

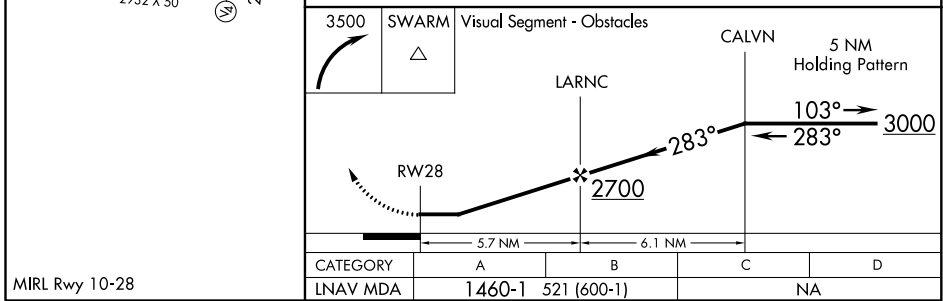
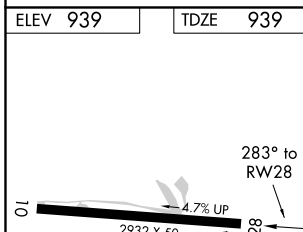
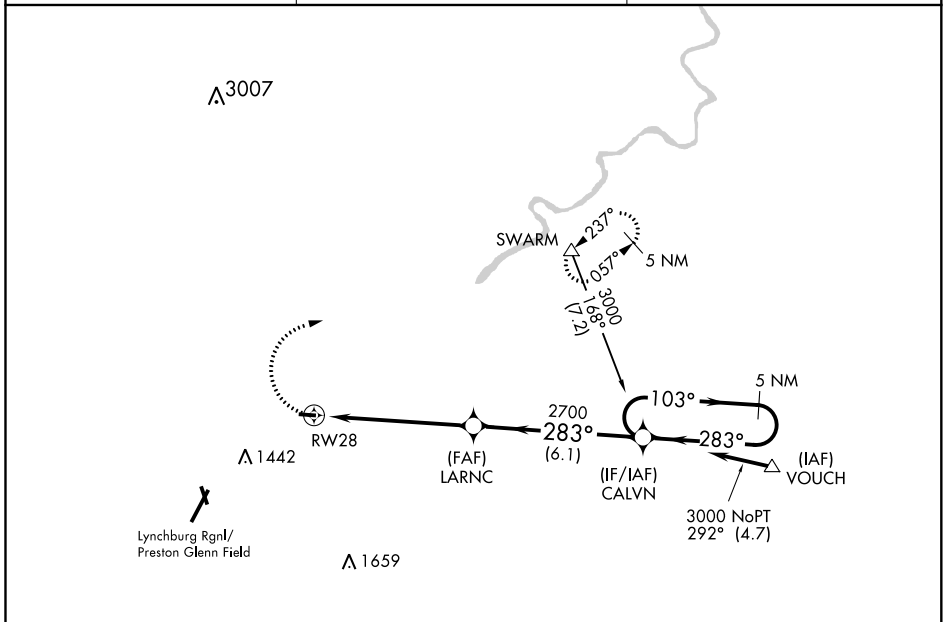
APP CRS	Rwy Idg	2932
283°	TDZE	939
	Apt Elev	939

RNAV (GPS) RWY 28

FALWELL (W24)

<p>▽ DME/DME RNP-0.3 NA. Use Lynchburg Regional/Preston Glenn Field altimeter setting, when not received use Farmville altimeter setting and increase all MDA 160 feet. Procedure NA at night.</p> <p>△ NA</p>	<p>MISSED APPROACH: Climbing right turn to 3500 direct SWARM and hold.</p>
--	--

<p>LYH ASOS</p> <p>119.8</p>	<p>ROANOKE APP CON</p> <p>135.0 254.325</p>	<p>UNICOM</p> <p>123.0 (CTAF)</p>
-------------------------------------	--	--



MIRL Rwy 10-28				
CATEGORY	A	B	C	D
LNAV MDA	1460-1	521 (600-1)		NA

NE-3, 17 JUN 2021 to 15 JUL 2021

NE-3, 17 JUN 2021 to 15 JUL 2021