

APP CRS	Rwy Idg	<b>3000</b>
<b>052°</b>	TDZE	<b>249</b>
	Apt Elev	<b>249</b>

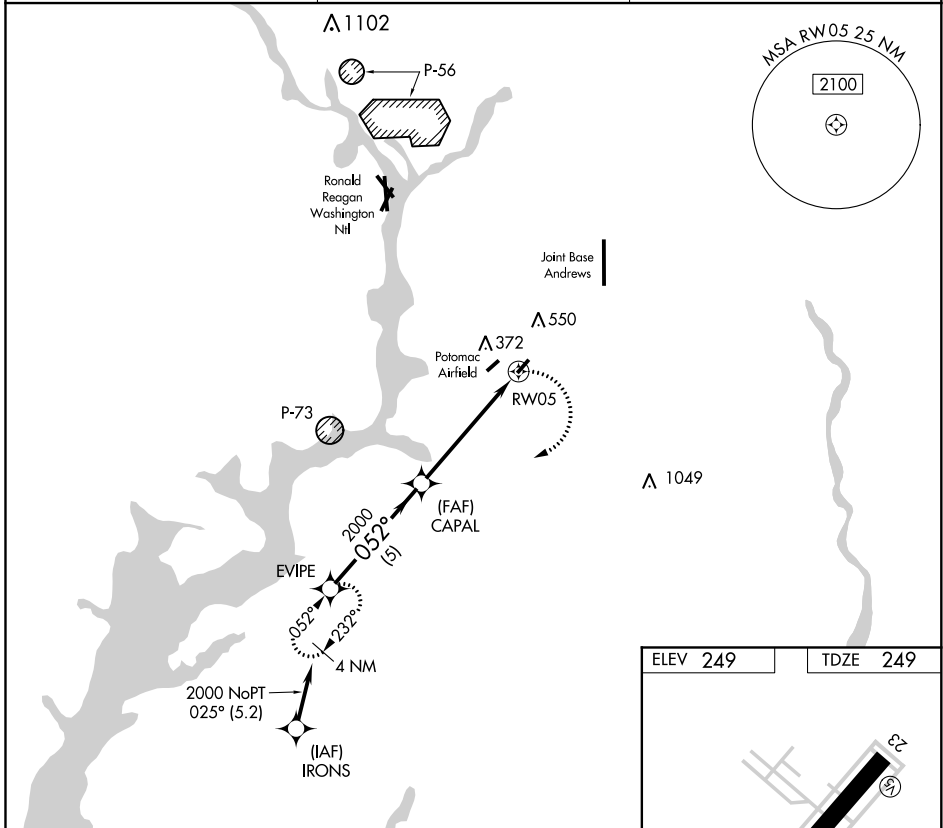
# RNAV (GPS) RWY 5

WASHINGTON EXEC/HYDE FLD (W32)

RNP APCH.
<p>▼ Use Joint Base Andrews allimeter setting. ▲ NA Circling NW Rwy 5-23 NA.</p>

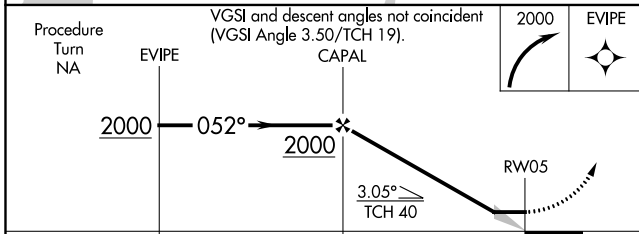
MISSED APPROACH: Climbing right turn to 2000 direct EVIPE WP and hold.

ADW ATIS	POTOMAC APP CON	UNICOM
<b>133.675 251.05</b>	<b>124.7 338.2</b>	<b>122.8 (CTAF)</b>



NE-3, 09 SEP 2021 to 07 OCT 2021

NE-3, 09 SEP 2021 to 07 OCT 2021



ELEV 249	TDZE 249
----------	----------

3000 x 60

052° to RW05

LIRL Rwy 5-23  
REIL Rwy 5

CATEGORY	A	B	C	D
LNAV MDA	660-1	411 (500-1)		NA
CIRCLING	680-1	860-1		NA
	431 (500-1)	611 (700-1)		NA