

WAAS CH <b>82039</b> <b>W13A</b>	APP CRS <b>132°</b>	Rwy Idg TDZE Apt Elev	<b>5500</b> <b>4227</b> <b>4264</b>
--	------------------------	-----------------------------	---

# RNAV (GPS) RWY 13

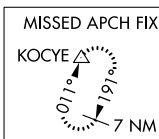
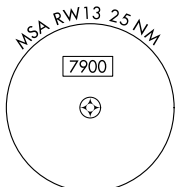
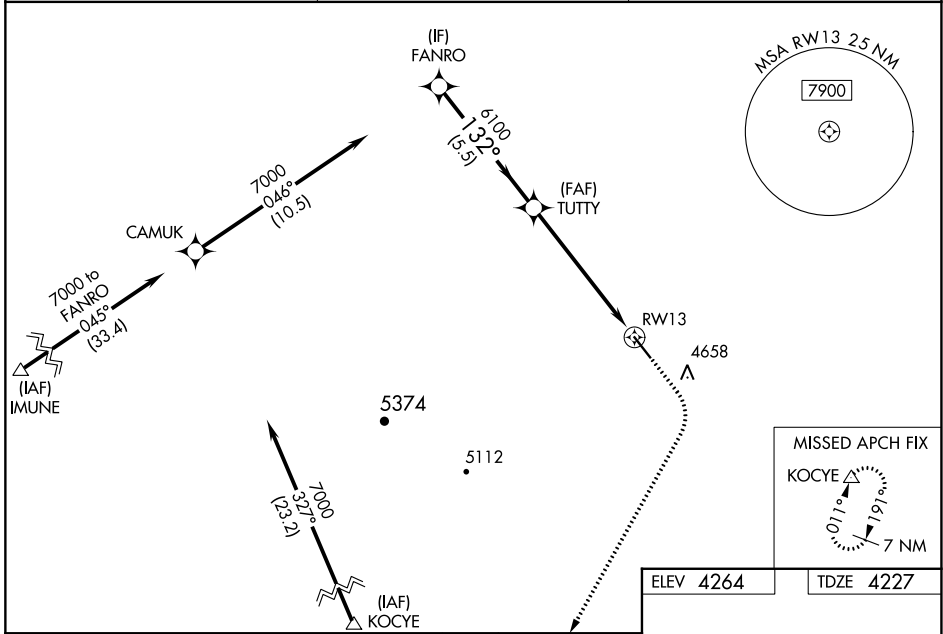
HULETT MUNI (W43)

**RNP APCH.**

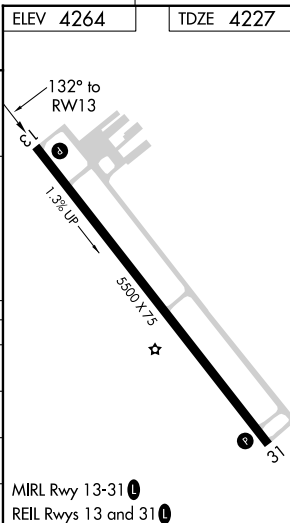
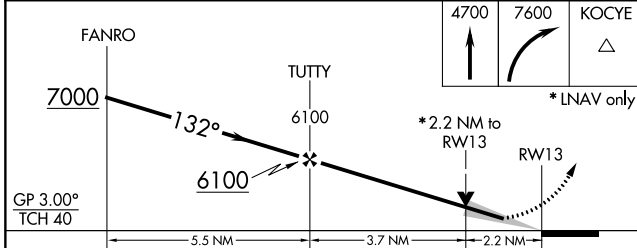
**⚠** For uncompensated Baro-VNAV systems, procedure NA below -23°C or above 53°C. Procedure NA at night. Baro-VNAV and VDP NA when using Gillette altimeter setting. When local altimeter setting not received, use Gillette altimeter setting and increase LPV DA to 4662 feet; LNAV/VNAV DA to 4807 feet, and all visibilities ½ SM. Increase all MDA 120 feet and LNAV Cat C/D visibility ½ SM, Circling Cat A/B ¼ SM, and Cat C ½ SM.

**MISSED APPROACH:**  
Climb to 4700 then climbing right turn to 7600 direct KOCYE and hold.

AWOS-3PT <b>128.775</b>	DENVER CENTER <b>127.95 338.2</b>	UNICOM <b>122.8 (CTAF) 0</b>
----------------------------	--------------------------------------	---------------------------------



ELEV 4264	TDZE 4227
-----------	-----------



CATEGORY	A	B	C	D
LPV DA		4542-1½	315 (300-1½)	
LNAV/VNAV DA		4687-1¾	460 (500-1¾)	
LNAV MDA	5100-1 873 (900-1)	5100-1¼ 873 (900-1¼)	5100-2½	873 (900-2½)
<b>C</b> CIRCLING	5100-1 836 (900-1)	5100-1¼ 836 (900-1¼)	5100-2½ 836 (900-2½)	5400-3 1136 (1200-3)

MIRL Rwy 13-31 0  
REIL Rwy 13 and 31 0

NW-1, 22 FEB 2024 to 21 MAR 2024

NW-1, 22 FEB 2024 to 21 MAR 2024