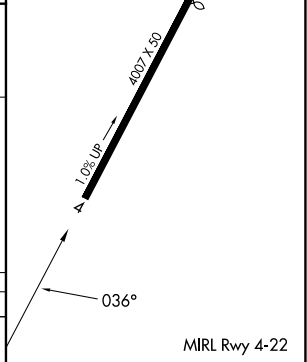
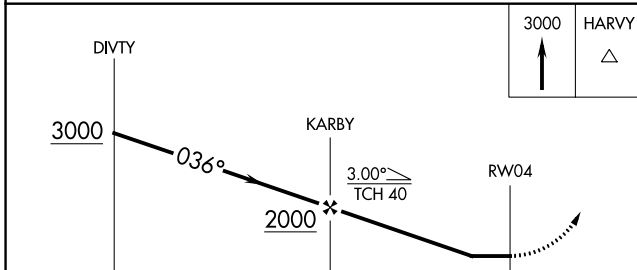
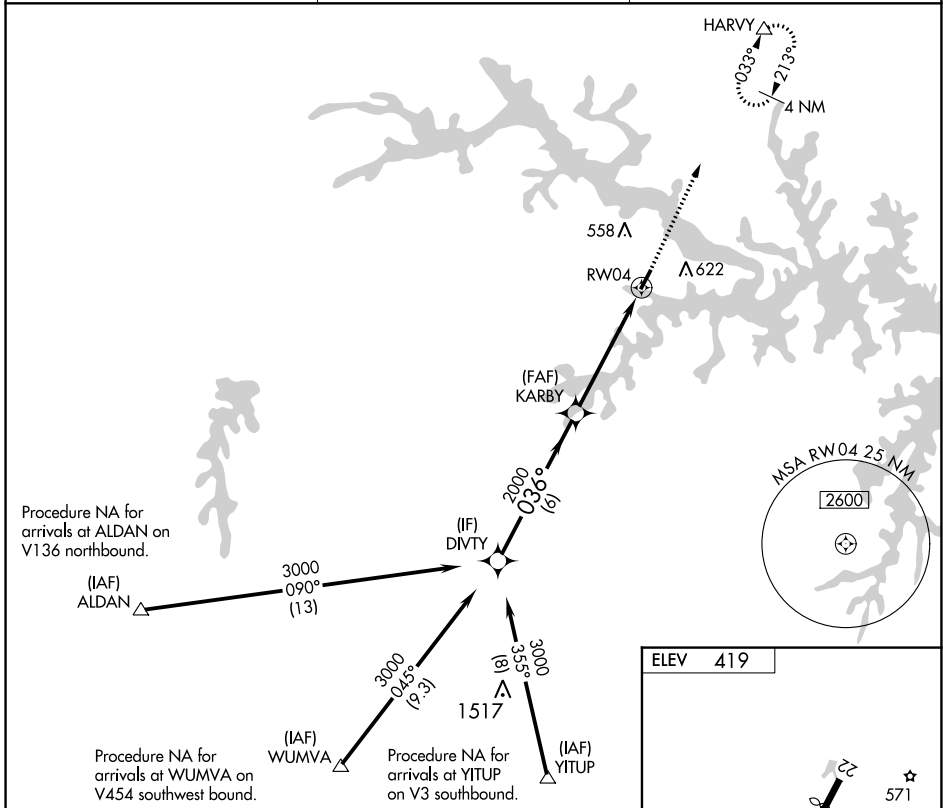


APP CRS <b>036°</b>	Rwy Idg TDZE Apt Elev	<b>N/A</b> <b>N/A</b> <b>419</b>
------------------------	-----------------------------	--

**RNAV (GPS)-A**  
LAKE COUNTRY RGNL (W63)

<p><b>▽</b> DME/DME RNP-0.3 NA. When local altimeter setting not received, use Chase City altimeter setting and increase all MDA 40 feet. Night landing: Rwy 22 NA. Helicopter visibility reduction below 3/4 SM NA.</p>	<p><b>△</b> MISSED APPROACH: Climb to 3000 direct HARVY and hold.</p>
--	---

AWOS-3 <b>118.225</b>	WASHINGTON CENTER <b>118.75 377.1</b>	CTAF <b>122.9</b>
--------------------------	--	----------------------



CATEGORY	A	B	C	D
CIRCLING	920-1 501 (600-1)	980-1 561 (600-1)	NA	

NE-3, 22 FEB 2024 to 21 MAR 2024

NE-3, 22 FEB 2024 to 21 MAR 2024

APP CRS	Rwy Idg	N/A
<b>216°</b>	TDZE	N/A
	Apt Elev	<b>419</b>

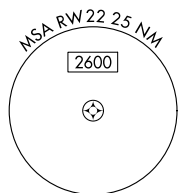
# RNAV (GPS)-B

LAKE COUNTRY RGNL (W63)

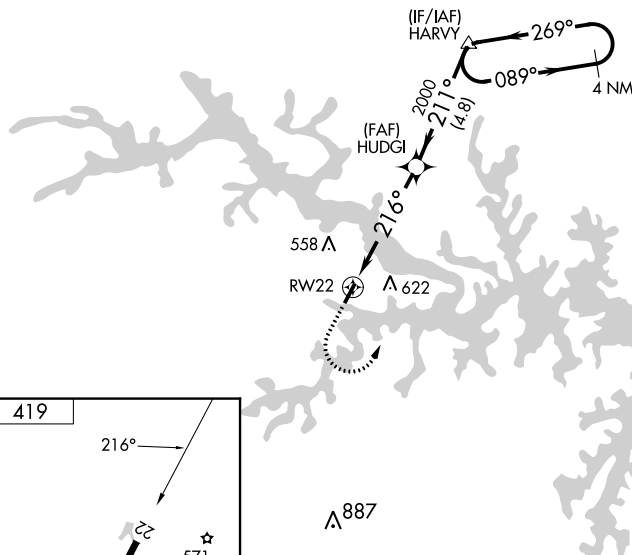
**⚠** DME/DME RNP-0.3 NA. Procedure NA at night. When local altimeter setting not received, use Chase City altimeter setting and increase all MDA 40 feet. Helicopter visibility reduction below 1 SM NA.

**⚠** MISSED APPROACH: Climbing left turn to 3000 direct HARVY and hold.

AWOS-3 <b>118.225</b>	WASHINGTON CENTER <b>118.75 377.1</b>	CTAF <b>122.9</b>
--------------------------	--	----------------------



NoPT for arrival at HARVY on V3 southwest bound and on V266 westbound.



NE-3, 22 FEB 2024 to 21 MAR 2024

NE-3, 22 FEB 2024 to 21 MAR 2024

