

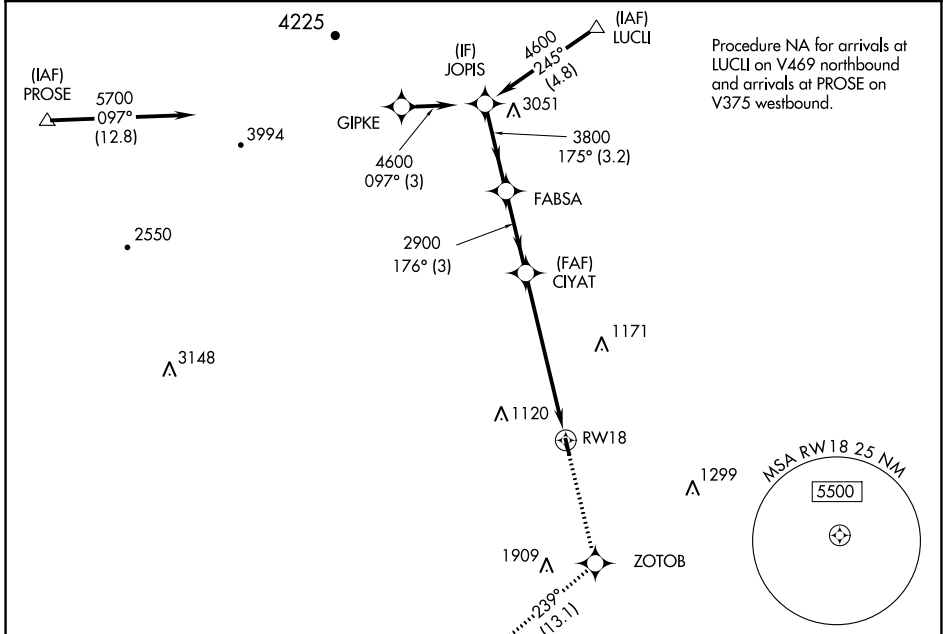
APP CRS	Rwy Idg	<b>3049</b>
<b>176°</b>	TDZE	<b>842</b>
	Apt Elev	<b>842</b>

# RNAV (GPS) RWY 18

NEW LONDON (W90)

RNP APCH.	Rwy 18 helicopter visibility reduction below 1 SM NA. Procedure NA at night. Use Lynchburg altimeter setting.	MISSED APPROACH: Climb to 4000 direct ZOTOB and on track 239° to AYARA and hold.
(V) NA		

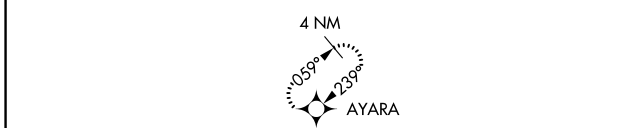
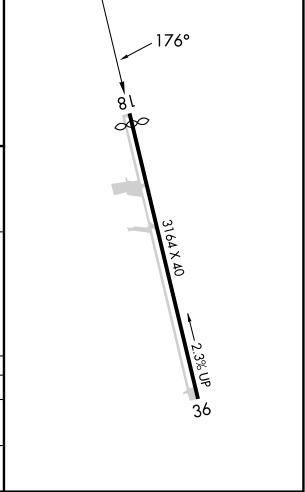
LYH ASOS <b>119.8</b>	ROANOKE APP CON <b>135.0 254.325</b>	UNICOM <b>122.8 (CTAF)</b>
--------------------------	---	-------------------------------



NE-3, 22 FEB 2024 to 21 MAR 2024

NE-3, 22 FEB 2024 to 21 MAR 2024

ELEV 842	TDZE 842
----------	----------



JOPIS	Visual Segment - Obstacles.		4000	ZOTOB	ir 239°	AYARA
4600	175°	FABSA	3800	176°	CIYAT	2900
3.2 NM		3 NM		6.2 NM		

CATEGORY	A	B	C	D
LNAV MDA	1860-3	1018 (1100-3)	NA	
CIRCLING	1860-3	1018 (1100-3)	NA	

APP CRS	Rwy Idg	<b>3164</b>
<b>356°</b>	TDZE	<b>831</b>
	Apt Elev	<b>842</b>

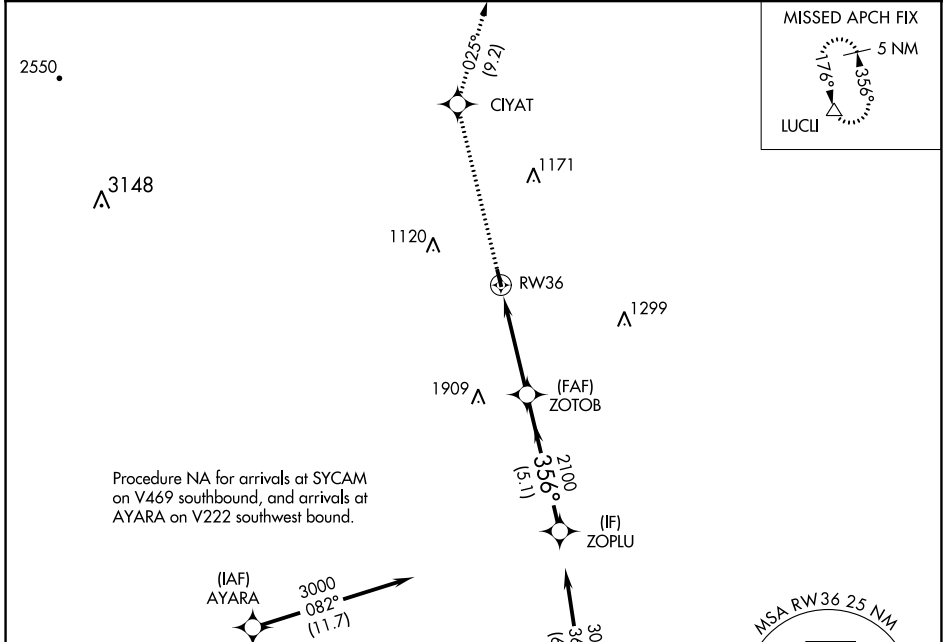
# RNAV (GPS) RWY 36

NEW LONDON (W90)

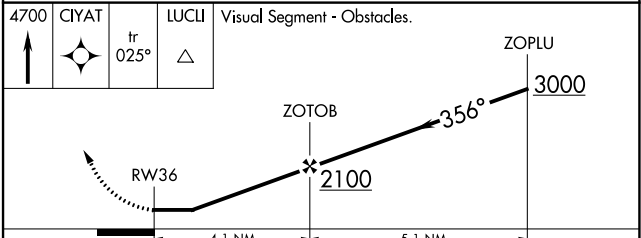
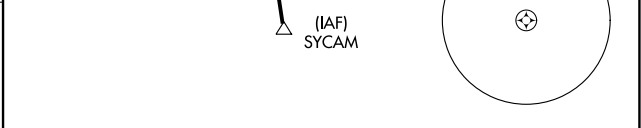
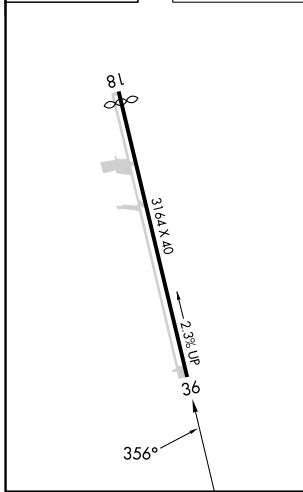
RNP APCH.  
 ▼ Rwy 36 helicopter visibility reduction below 1 SM NA. Use  
 ▲ NA Lynchburg altimeter setting. Procedure NA at night.

MISSED APPROACH: Climb to 4700 direct  
 CIYAT and on track 025° to LUCLI and hold.

LYH ASOS <b>119.8</b>	ROANOKE APP CON <b>135.0 254.325</b>	UNICOM <b>122.8 (CTAF)</b>
--------------------------	---	-------------------------------



ELEV 842	TDZE 831
----------	----------



CATEGORY	A	B	C	D
LNAV MDA	1840-3	1009 (1000-3)	NA	
CIRCLING	1860-3	1018 (1100-3)	NA	

NE-3, 22 FEB 2024 to 21 MAR 2024

NE-3, 22 FEB 2024 to 21 MAR 2024