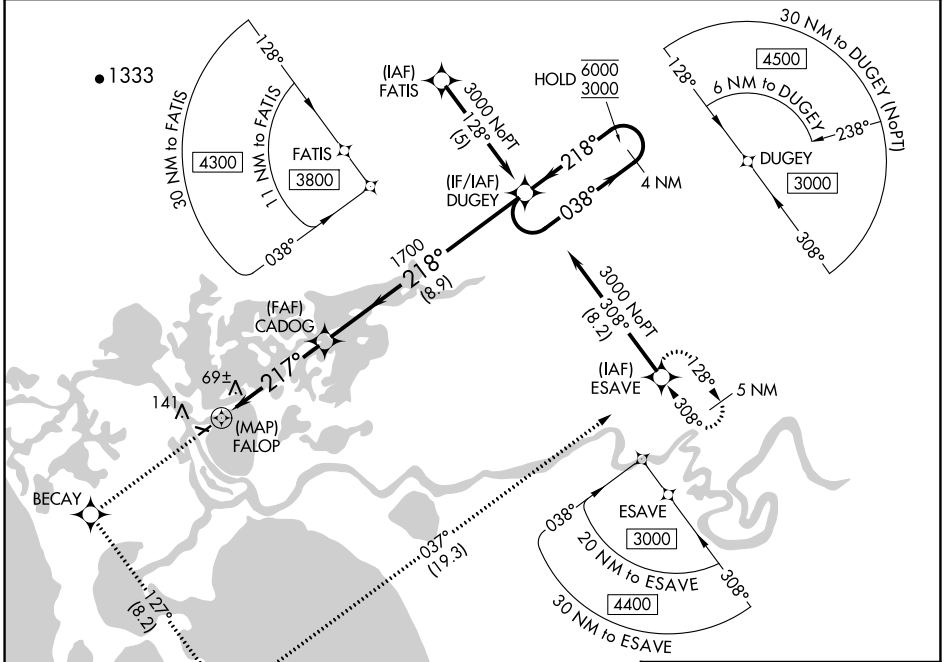


APP CRS	Rwy Idg	<b>3002</b>
<b>217°</b>	TDZE	<b>17</b>
	Apt Elev	<b>17</b>

# RNAV (GPS) Y RWY 22

SELAWIK (WLK) (PASK)

RNP APCH. ▼ Circling Rwy 9, 27 NA at night.		MISSED APPROACH: Climb to 3000 direct BECAY and left turn on track 127° to APACU and left turn on track 037° to ESAVE and hold.	
AWOS-3P <b>135.65</b>	ANCHORAGE CENTER <b>119.2 263.0</b>	KOTZEBUE RADIO <b>122.5</b>	CTAF <b>122.7</b>

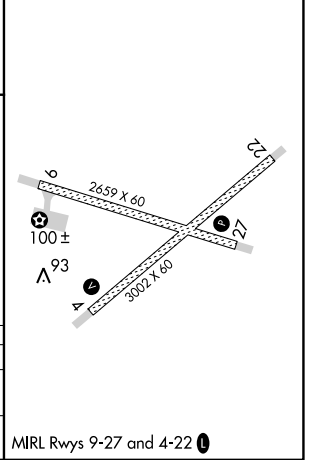


AK, 25 JAN 2024 to 21 MAR 2024

AK, 25 JAN 2024 to 21 MAR 2024

ELEV 17	TDZE 17
---------	---------

3000	BECAY	APACU	ESAVE	DUGEY
↑	✦	✦	✦	✦
	tr 127°	tr 037°		
CADOG				
FALOP	≤ 3.05° TCH 45	217°	218°	6000 / 3000
0.5	4.6 NM	8.9 NM	4 NM	Holding Pattern
CATEGORY	A	B	C	D
LNAV MDA	320-1 303 (400-1)			
CIRCLING	480-1 463 (500-1)	580-1 563 (600-1)	580-1½ 563 (600-1½)	580-2 563 (600-2)



MIRL Rwy 9-27 and 4-22