

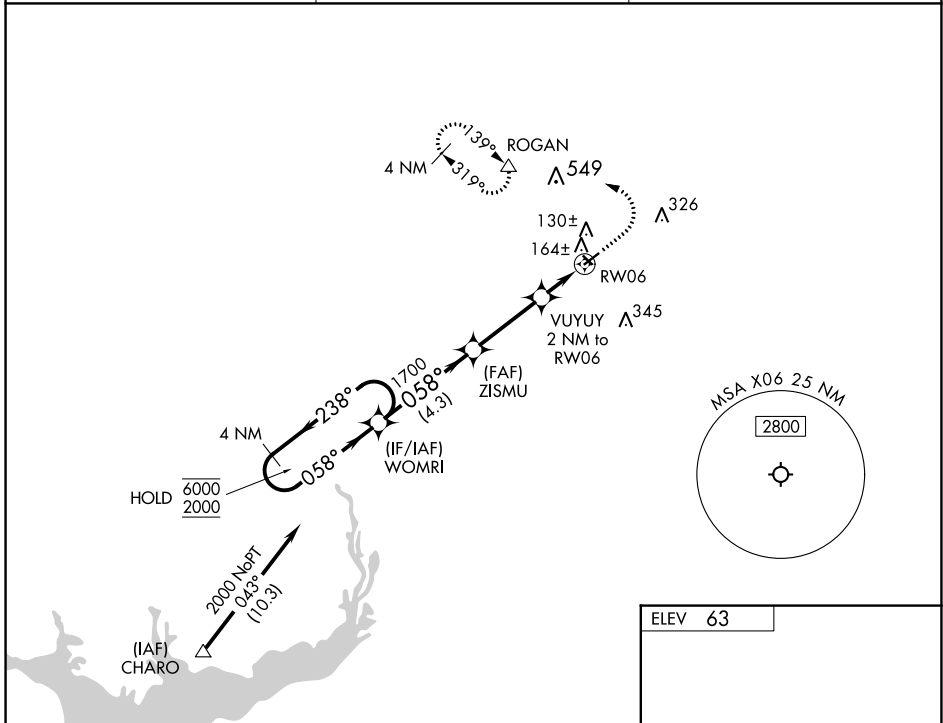
APP CRS	Rwy Idg	N/A
058°	TDZE	N/A
	Apt Elev	63

RNAV (GPS)-A

ARCADIA MUNI (X06)

RNP APCH - GPS.	MISSED APPROACH: Climb to 1400 then climbing left turn to 2000 direct ROGAN and hold.
<p>▼ Circling NA to Rwys 14 and 32. Procedure NA at night.</p> <p>▲ NA Rwy 06, 24 helicopter visibility reduction below 1 SM NA. Use Punta Gorda altimeter setting; when not received, use Sebring altimeter setting and increase all MDAs 40 feet.</p>	

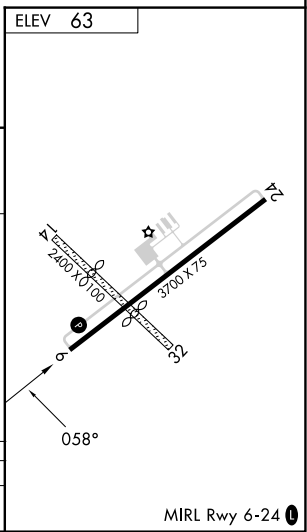
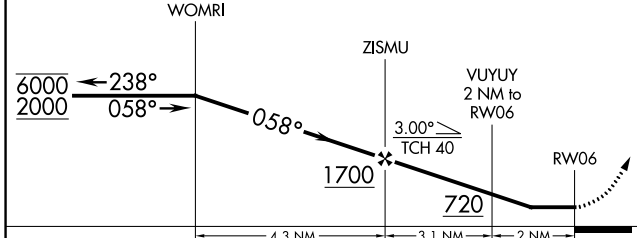
PGD ASOS 135.675	MIAMI CENTER 134.55 257.7	UNICOM 123.0 (CTAF) 0
----------------------------	-------------------------------------	---------------------------------



SE-3, 22 FEB 2024 to 21 MAR 2024

SE-3, 22 FEB 2024 to 21 MAR 2024

4 NM Holding Pattern	VGSI and descent angles not coincident (VGSI Angle 3.00/TCH 25).	1400	2000	ROGAN
		↑	↘	△



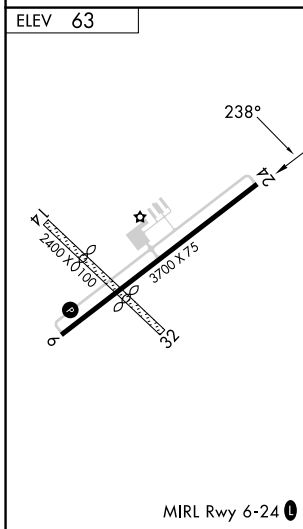
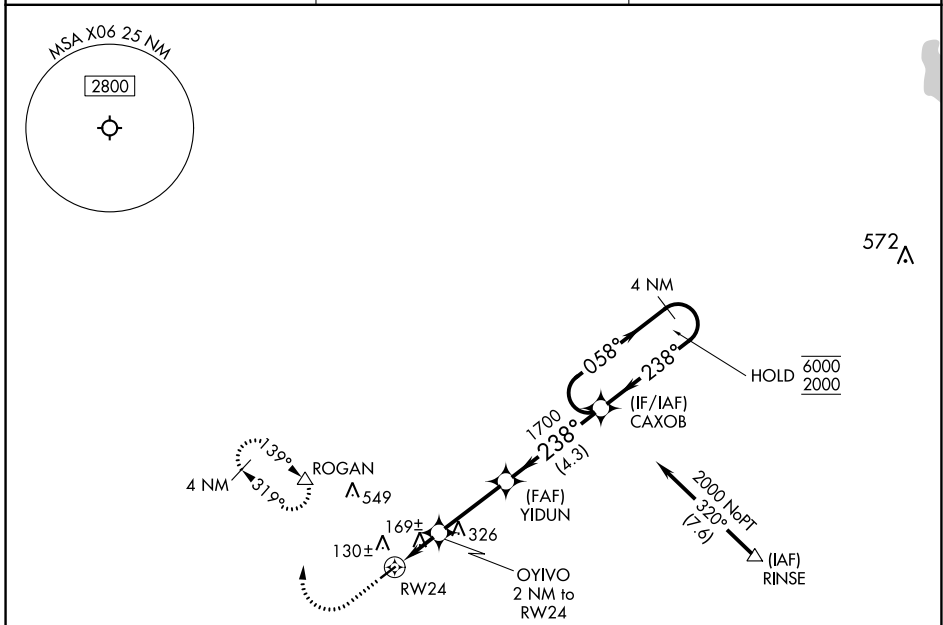
CATEGORY	A	B	C	D
CIRCLING	560-1 497 (500-1)	700-1 637 (700-1)	NA	

APP CRS	Rwy Idg	N/A
238°	TDZE	N/A
	Apt Elev	63

RNAV (GPS)-B

ARCADIA MUNI (X06)

RNP APCH - GPS.		<p>MISSED APPROACH: Climb to 1400 then climbing right turn to 2000 direct ROGAN and hold.</p>
<p>▼ Circling NA to Rwys 14 and 32. Procedure NA at night. Rwy 24, 06 helicopter visibility reduction below 1 SM NA. Use Punta Gorda altimeter setting; when not received, use Sebring altimeter setting and increase all MDAs 40 feet.</p> <p>▲ NA</p>		
PGD ASOS 135.675	MIAMI CENTER 134.55 257.7	UNICOM 123.0 (CTAF) 0



ELEV 63				
1400	2000	ROGAN	4 NM Holding Pattern	
		YIDUN	CAXOB	
		1700	6000	2000
		740		
CATEGORY	A	B	C	D
CIRCLING	560-1 497 (500-1)	700-1 637 (700-1)	NA	

MIRL Rwy 6-24 **0**