

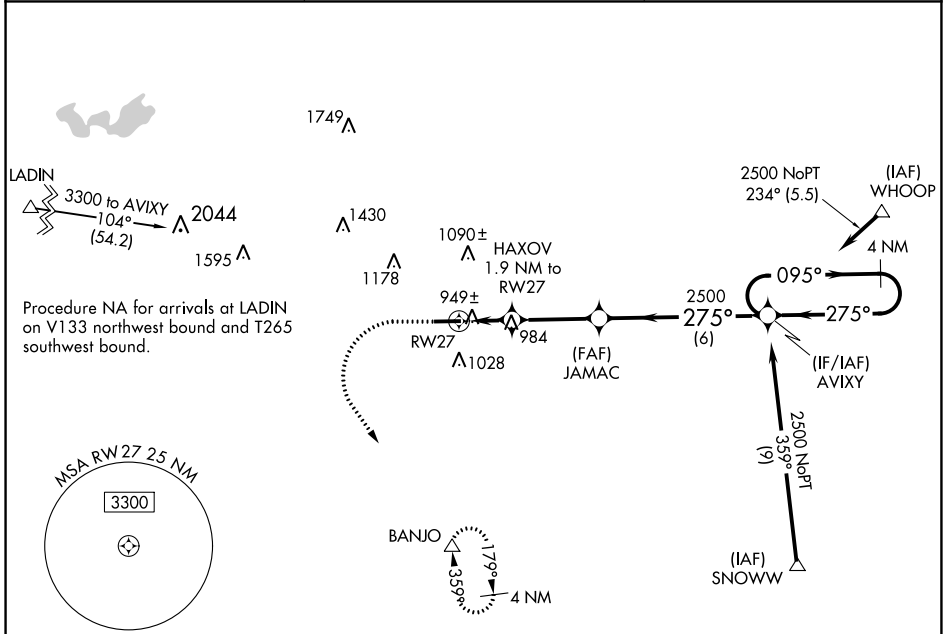
WAAS CH 53541 W27A	APP CRS 275°	Rwy Idg TDZE Apt Elev	5000 877 882
--	------------------------	-----------------------------	---

RNAV (GPS) RWY 27

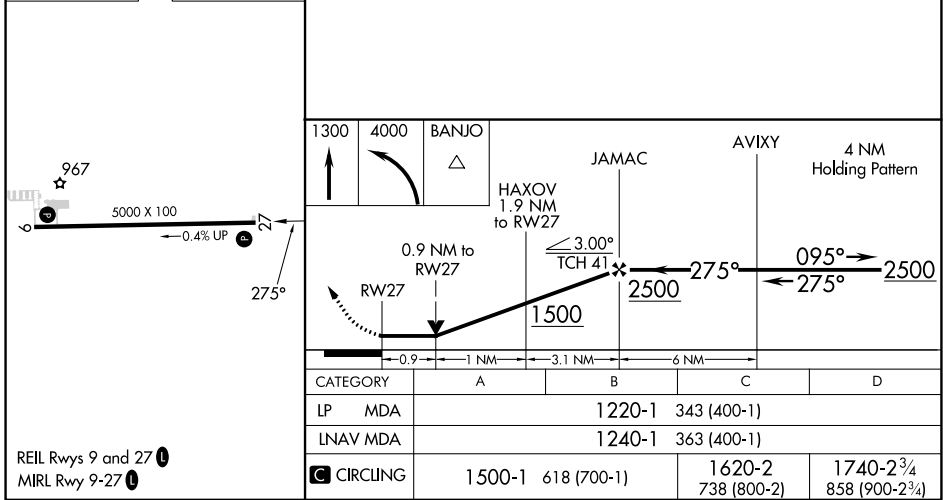
WEST BRANCH COMMUNITY (Y31)

RNP APCH - GPS.	MISSED APPROACH: (Do not exceed 240K until BANJO) Climb to 1300, then climbing left turn to 4000 direct BANJO and hold, continue climb-in-hold to 4000.
-----------------	--

AWOS-3P 119.575	MINNEAPOLIS CENTER 125.475 269.45	UNICOM 122.8 (CTAF) 0
---------------------------	---	---------------------------------



ELEV 882	TDZE 877
----------	----------



REIL Rws 9 and 27 0	MIRL Rwy 9-27 0
---------------------	-----------------

EC-1, 22 FEB 2024 to 21 MAR 2024

EC-1, 22 FEB 2024 to 21 MAR 2024

APP CRS	Rwy Idg	5000
095°	TDZE	882
	Apt Elev	882

RNAV (GPS) RWY 9

WEST BRANCH COMMUNITY (Y31)

RNP APCH - GPS.

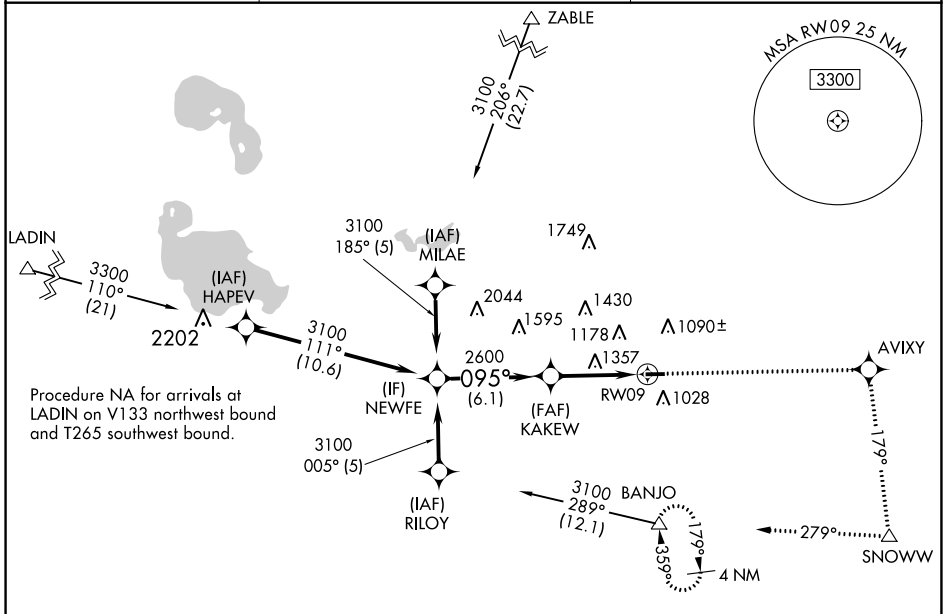
▼ Rwy 9 helicopter visibility reduction below 1 SM NA. When local altimeter setting not received, use MBS Intl altimeter setting and increase all MDA 140 feet, increase LNAV Cat A visibility ¼ mile and Cat C/D ½ mile, increase Circling Cat A visibility ¼ mile and Cat C/D ½ mile. Straight-in Rwy 9 NA at night, Circling Rwy 9 NA at night.

MISSED APPROACH: Climb to 4000 direct AVIXY and via track 179° to SNOWW and via track 279° to BANJO and hold.

AWOS-3P
119.575

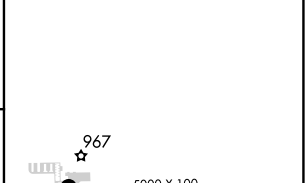
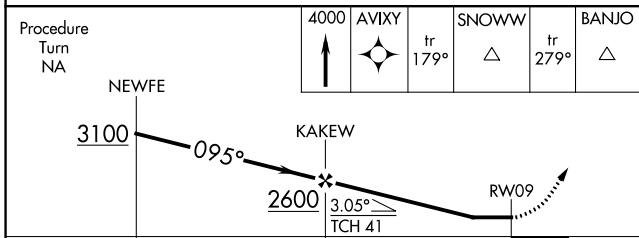
MINNEAPOLIS CENTER
125.475 269.45

UNICOM
122.8 (CTAF)



Procedure NA for arrivals at LADIN on V133 northwest bound and T265 southwest bound.

ELEV 882	TDZE 882
----------	----------



CATEGORY	A	B	C	D
LNAV MDA	1660-1 778 (800-1)	1660-1¼ 778 (800-1¼)	1660-2¼ 778 (800-2¼)	1660-2½ 778 (800-2½)
CIRCLING	1660-1 778 (800-1)	1660-1¼ 778 (800-1¼)	1660-2¼ 778 (800-2¼)	1740-2¾ 858 (900-2¾)

REIL Rwys 9 and 27
MIRL Rwy 9-27

EC-1, 22 FEB 2024 to 21 MAR 2024

EC-1, 22 FEB 2024 to 21 MAR 2024